

For Research Use Only

# SGLT2 Polyclonal antibody

Catalog Number: 24654-1-AP

Featured Product

42 Publications



## Basic Information

### Catalog Number:

24654-1-AP

### Size:

150ul, Concentration: 650 ug/ml by Nanodrop;

### Source:

Rabbit

### Isotype:

IgG

### Immunogen Catalog Number:

AG19163

### GenBank Accession Number:

BC131542

### GeneID (NCBI):

6524

### UNIPROT ID:

P31639

### Full Name:

solute carrier family 5 (sodium/glucose cotransporter), member 2

### Calculated MW:

672 aa, 73 kDa

### Observed MW:

69-70 kDa

### Purification Method:

Antigen affinity purification

### Recommended Dilutions:

WB: 1:500-1:3000

IHC: 1:200-1:800

IF-P: 1:50-1:500

## Applications

### Tested Applications:

WB, IHC, IF-P, ELISA

### Cited Applications:

WB, IHC, IF, IP

### Species Specificity:

human, mouse, rat

### Cited Species:

human, mouse, rat

**Note-IHC: suggested antigen retrieval with TE buffer pH 9.0; (\*) Alternatively, antigen retrieval may be performed with citrate buffer pH 6.0**

### Positive Controls:

**WB**: mouse kidney tissue, A549 cells, 37°C incubated mouse kidney, rat kidney tissue

**IHC**: human kidney tissue, rat kidney tissue

**IF-P**: mouse kidney tissue,

## Background Information

Sodium-glucose cotransporter 2 (SGLT2), encoded by SLC5A2, utilizes the electrochemical sodium gradient to transport glucose against the cell's internal concentration gradient. Mainly expressed on brush border membrane (BBM) of epithelial cells in the early segment of the proximal tubule, SGLT2 mediates most of the glucose reabsorption by the kidney overall. Inhibition of SGLT2 could improve glucose homeostasis of diabetic patients, which has been considered as a novel strategy for diabetes treatment.

## Notable Publications

Author	Pubmed ID	Journal	Application
Dan Nakano	36131166	Med Mol Morphol	WB, IHC
Nunzia D'Onofrio	34500107	Mol Metab	WB
Mary Taub	36133305	Front Endocrinol (Lausanne)	WB

## Storage

### Storage:

Store at -20°C. Stable for one year after shipment.

### Storage Buffer:

PBS with 0.02% sodium azide and 50% glycerol, pH7.3

Aliquoting is unnecessary for -20°C storage

\*\*\* 20ul sizes contain 0.1% BSA

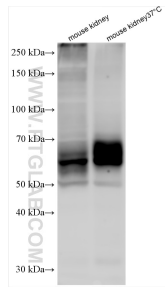
For technical support and original validation data for this product please contact:

T: 1 (888) 4PTGLAB (1-888-478-4522) (toll free in USA), or 1(312) 455-8498 (outside USA)

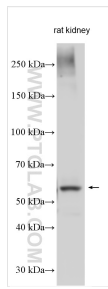
E: [proteintech@ptglab.com](mailto:proteintech@ptglab.com)  
W: [ptglab.com](http://ptglab.com)

This product is exclusively available under Proteintech Group brand and is not available to purchase from any other manufacturer.

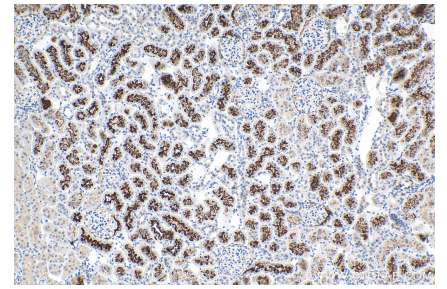
## Selected Validation Data



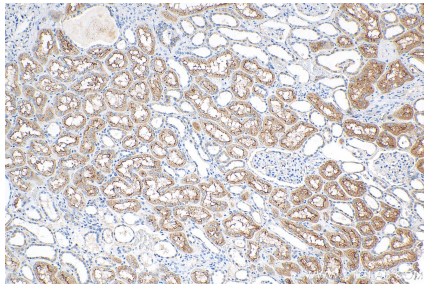
Various lysates were subjected to SDS PAGE followed by western blot with 24654-1-AP (SGLT2 antibody) at dilution of 1:1500 incubated at room temperature for 1.5 hours.



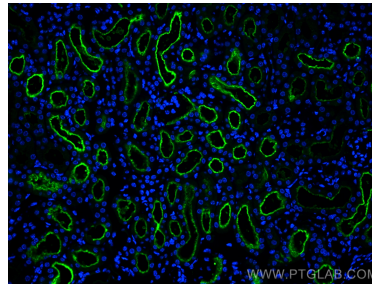
Rat kidney tissue were subjected to SDS PAGE followed by western blot with 24654-1-AP (SGLT2 antibody) at dilution of 1:1500 incubated at room temperature for 1.5 hours.



Immunohistochemical analysis of paraffin-embedded rat kidney tissue slide using 24654-1-AP (SGLT2 antibody) at dilution of 1:400 (under 10x lens). Heat mediated antigen retrieval with Tris-EDTA buffer (pH 9.0).



Immunohistochemical analysis of paraffin-embedded human kidney tissue slide using 24654-1-AP (SGLT2 antibody) at dilution of 1:400 (under 10x lens). Heat mediated antigen retrieval with Tris-EDTA buffer (pH 9.0).



Immunofluorescent analysis of (4% PFA) fixed paraffin-embedded mouse kidney tissue using SGLT2 antibody (24654-1-AP) at dilution of 1:200 and CoraLite® 488-Conjugated Goat Anti-Rabbit IgG(H+L) (SA00013-2). Heat mediated antigen retrieval with Tris-EDTA buffer (pH 9.0).