

For Research Use Only

OPN1SW Polyclonal antibody

Catalog Number: 24660-1-AP



Basic Information

Catalog Number: 24660-1-AP	GenBank Accession Number: BC156719	Purification Method: Antigen affinity purification
Size: 150ul , Concentration: 350 ug/ml by Nanodrop;	GeneID (NCBI): 611	Recommended Dilutions: IF-P 1:50-1:500
Source: Rabbit	UNIPROT ID: P03999	
Isotype: IgG	Full Name: opsin 1 (cone pigments), short-wave-sensitive	
Immunogen Catalog Number: AG20387	Calculated MW: 348 aa, 39 kDa	

Applications

Tested Applications: IHC, IF-P, ELISA	Positive Controls: IF-P : mouse eye tissue,
Species Specificity: human, mouse	

Background Information

OPN1SW (Short-wave-sensitive opsin 1) belongs to the G-protein coupled receptor 1 family, opsin subfamily. It's one of three types of cone photoreceptors responsible for normal color vision. Inherited tritan color vision deficiencies exhibit an autosomal dominant inheritance pattern and are caused by mutations in OPN1SW (PMID: 32400513).

Storage

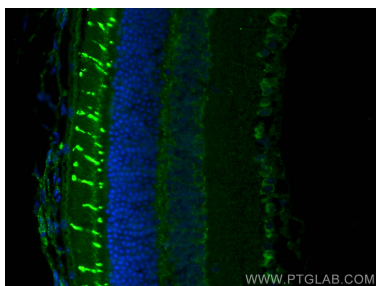
Storage:
Store at -20°C. Stable for one year after shipment.
Storage Buffer:
PBS with 0.02% sodium azide and 50% glycerol
Aliquoting is unnecessary for -20°C storage

*** 20ul sizes contain 0.1% BSA

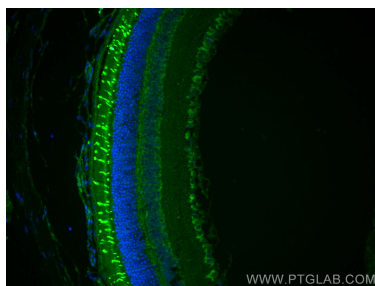
For technical support and original validation data for this product please contact:
T: 1 (888) 4PTGLAB (1-888-478-4522) (toll free in USA), or 1(312) 455-8498 (outside USA)
E: proteintech@ptglab.com
W: ptglab.com

This product is exclusively available under Proteintech Group brand and is not available to purchase from any other manufacturer.

Selected Validation Data



Immunofluorescent analysis of (4% PFA) fixed mouse eye tissue using OPN1SW antibody (24660-1-AP) at dilution of 1:200 and CoraLite® 488-Conjugated AffiniPure Goat Anti-Rabbit IgG(H+L).



Immunofluorescent analysis of (4% PFA) fixed mouse eye tissue using OPN1SW antibody (24660-1-AP) at dilution of 1:200 and CoraLite® 488-Conjugated AffiniPure Goat Anti-Rabbit IgG(H+L).