

For Research Use Only

LRSAM1 Polyclonal antibody, PBS Only

Catalog Number: 24666-1-PBS

Featured Product



Basic Information

Catalog Number:

24666-1-PBS

Size:

100ug, Concentration: 1 mg/ml by Nanodrop;

Source:

Rabbit

Isotype:

IgG

Immunogen Catalog Number:

AG20415

GenBank Accession Number:

BC009239

GeneID (NCBI):

90678

UNIPROT ID:

Q6UWEO

Full Name:

leucine rich repeat and sterile alpha motif containing 1

Calculated MW:

723 aa, 84 kDa

Observed MW:

84 kDa

Purification Method:

Antigen affinity purification

Applications

Tested Applications:

WB, IHC, IF/ICC, Indirect ELISA

Species Specificity:

human, mouse

Background Information

LRSAM1 also named as hTAL, RIFLE or Tsg101 associated ligase is a 723 amino acid protein, which contains 6 LRR repeats, 1 Ring-type zinc finger and 1 SAM domain. LRSAM1 is localized in cytoplasm and highly expressed in adult spinal cord motoneurons as well as in fetal spinal cord and muscle tissue. As a E3 ubiquitin protein ligase, LRSAM1 mediates monoubiquitination of TSG101 at multiple sites, leading to inactivate the ability of TSG101 to sort endocytic and exocytic cargos, LRSAM1 gene mutation has an association with Charcot Maire Tooth disease 2P.

Storage

Storage:

Store at -80°C.

Storage Buffer:

PBS Only

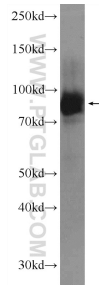
For technical support and original validation data for this product please contact:

T: 1 (888) 4PTGLAB (1-888-478-4522) (toll free in USA), or 1(312) 455-8498 (outside USA)

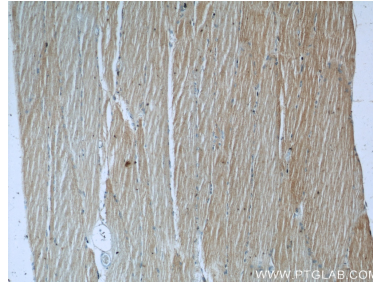
E: proteintech@ptglab.com
W: ptglab.com

This product is exclusively available under Proteintech Group brand and is not available to purchase from any other manufacturer.

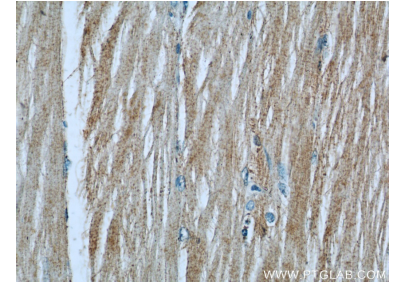
Selected Validation Data



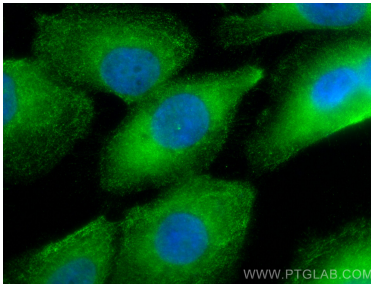
Jurkat cells were subjected to SDS PAGE followed by western blot with 24666-1-AP (LRSAM1 Antibody) at dilution of 1:1000 incubated at room temperature for 1.5 hours. This data was developed using the same antibody clone with 24666-1-PBS in a different storage buffer formulation.



Immunohistochemical analysis of paraffin-embedded human skeletal muscle slide using 24666-1-AP (LRSAM1 Antibody) at dilution of 1:50. This data was developed using the same antibody clone with 24666-1-PBS in a different storage buffer formulation.



Immunohistochemical analysis of paraffin-embedded human skeletal muscle slide using 24666-1-AP (LRSAM1 Antibody) at dilution of 1:50. This data was developed using the same antibody clone with 24666-1-PBS in a different storage buffer formulation.



Immunofluorescent analysis of (-20°C Methanol) fixed A431 cells using LRSAM1 antibody (24666-1-AP) at dilution of 1:400 and CoraLite®488-Conjugated Goat Anti-Rabbit IgG(H+L) (SA00013-2). This data was developed using the same antibody clone with 24666-1-PBS in a different storage buffer formulation.