

For Research Use Only

TBC1D4 Polyclonal antibody

Catalog Number: 24667-1-AP



Basic Information

Catalog Number: 24667-1-AP	GenBank Accession Number: BC151239	Purification Method: Antigen affinity purification
Size: 150ul , Concentration: 450 ug/ml by Nanodrop;	GeneID (NCBI): 9882	Recommended Dilutions: WB 1:1000-1:5000
Source: Rabbit	UNIPROT ID: O60343	IHC 1:200-1:800
Isotype: IgG	Full Name: TBC1 domain family, member 4	IF/ICC 1:50-1:500
Immunogen Catalog Number: AG20327	Calculated MW: 1299 aa, 147 kDa	
	Observed MW: 160 kDa	

Applications

Tested Applications:
WB, IHC, IF/ICC, ELISA

Species Specificity:
human, rat

Note-IHC: suggested antigen retrieval with **TE buffer pH 9.0; (*) Alternatively, antigen retrieval may be performed with citrate buffer pH 6.0**

Positive Controls:

WB : HCT 116 cells, HeLa cells, HepG2 cells, Jurkat cells, K-562 cells, PC-12 cells

IHC : mouse colon tissue, human colon tissue, human heart tissue

IF/ICC : HeLa cells,

Background Information

TBC1D4, also named as AS160, KIAA0603, may act as a GTPase-activating protein for RAB2A, RAB8A, RAB10 and RAB14. Isoform 2 promotes insulin-induced glucose transporter SLC2A4/GLUT4 translocation at the plasma membrane, thus increasing glucose uptake. The antibody recognizes all the isoform of TBC1D4.

Storage

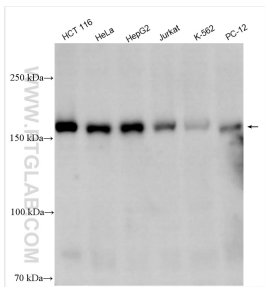
Storage:
Store at -20°C. Stable for one year after shipment.
Storage Buffer:
PBS with 0.02% sodium azide and 50% glycerol pH 7.3.
Aliquoting is unnecessary for -20°C storage

***** 20ul sizes contain 0.1% BSA**

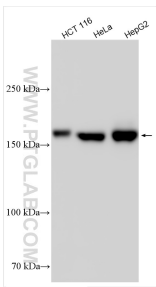
For technical support and original validation data for this product please contact:
T: 1 (888) 4PTGLAB (1-888-478-4522) (toll free in USA), or 1(312) 455-8498 (outside USA)
E: proteintech@ptglab.com
W: ptglab.com

This product is exclusively available under Proteintech Group brand and is not available to purchase from any other manufacturer.

Selected Validation Data



Various lysates were subjected to SDS PAGE followed by western blot with 24667-1-AP (TBC1D4 antibody) at dilution of 1:500 incubated at room temperature for 1.5 hours.



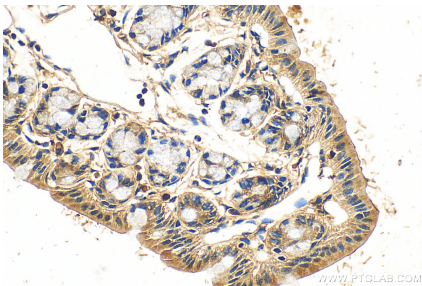
Various lysates were subjected to SDS PAGE followed by western blot with 24667-1-AP (TBC1D4 antibody) at dilution of 1:2500 incubated at room temperature for 1.5 hours.



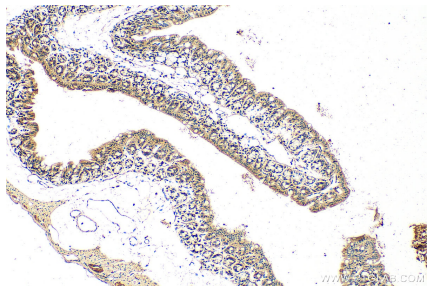
Immunohistochemical analysis of paraffin-embedded human colon slide using 24667-1-AP (TBC1D4 Antibody) at dilution of 1:50.



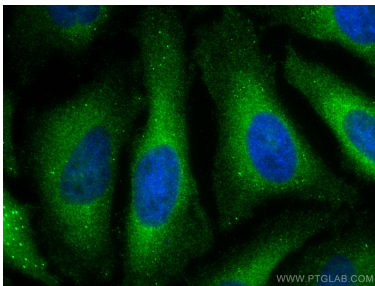
Immunohistochemical analysis of paraffin-embedded human colon slide using 24667-1-AP (TBC1D4 Antibody) at dilution of 1:50.



Immunohistochemical analysis of paraffin-embedded mouse colon tissue slide using 24667-1-AP (TBC1D4 antibody) at dilution of 1:400 (under 40x lens). Heat mediated antigen retrieval with Tris-EDTA buffer (pH 9.0).



Immunohistochemical analysis of paraffin-embedded mouse colon tissue slide using 24667-1-AP (TBC1D4 antibody) at dilution of 1:400 (under 10x lens). Heat mediated antigen retrieval with Tris-EDTA buffer (pH 9.0).



Immunofluorescent analysis of (4% PFA) fixed HeLa cells using TBC1D4 antibody (24667-1-AP) at dilution of 1:200 and CoraLite® 488-Conjugated Goat Anti-Rabbit IgG(H+L).