

For Research Use Only

AMMECR1 Polyclonal antibody

Catalog Number: 24687-1-AP



Basic Information

Catalog Number:

24687-1-AP

Size:

150ul, Concentration: 800 ug/ml by Nanodrop and 447 ug/ml by Bradford method using BSA as the standard;

Source:

Rabbit

Isotype:

IgG

Immunogen Catalog Number:

AG16977

GenBank Accession Number:

BC060813

GeneID (NCBI):

9949

UNIPROT ID:

Q9Y4X0

Full Name:

Alport syndrome, mental retardation, midface hypoplasia and elliptocytosis chromosomal region gene 1

Calculated MW:

330 aa, 35 kDa

Observed MW:

45 kDa

Purification Method:

Antigen affinity purification

Recommended Dilutions:

WB 1:500-1:1000

IHC 1:50-1:500

Applications

Tested Applications:

WB, IHC, ELISA

Species Specificity:

human, mouse

Note-IHC: suggested antigen retrieval with TE buffer pH 9.0; (*) Alternatively, antigen retrieval may be performed with citrate buffer pH 6.0

Positive Controls:

WB : Jurkat cells, mouse liver tissue, mouse uterus tissue

IHC : mouse cerebellum tissue,

Background Information

AMMECR1 also named as AMME syndrome candidate gene 1 protein is a 333 amino acid protein, which contains 1 AMMECR1 domain. Containing a glycine-rich N terminus, the AMMECR1 protein exhibits putative nuclear localization and a substantial level of instability, suggesting it plays a role in regulation. The deletion of AMMECR1 gene may be involved in glomerulonephritis, sensorineural hearing loss, mental retardation, midface hypoplasia and elliptocytosis.

Storage

Storage:

Store at -20°C. Stable for one year after shipment.

Storage Buffer:

PBS with 0.02% sodium azide and 50% glycerol pH 7.3.

Aliquoting is unnecessary for -20°C storage

*** 20ul sizes contain 0.1% BSA

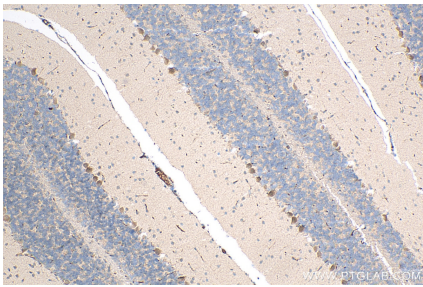
For technical support and original validation data for this product please contact:

T: 1 (888) 4PTGLAB (1-888-478-4522) (toll free in USA), or 1(312) 455-8498 (outside USA)

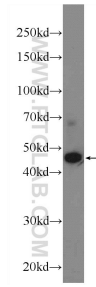
E: proteintech@ptglab.com
W: ptglab.com

This product is exclusively available under Proteintech Group brand and is not available to purchase from any other manufacturer.

Selected Validation Data



Immunohistochemical analysis of paraffin-embedded mouse cerebellum tissue slide using 24687-1-AP (AMMECR1 antibody) at dilution of 1:200 (under 10x lens). Heat mediated antigen retrieval with Tris-EDTA buffer (pH 9.0).



Jurkat cells were subjected to SDS PAGE followed by western blot with 24687-1-AP (AMMECR1 Antibody) at dilution of 1:600 incubated at room temperature for 1.5 hours.