

For Research Use Only

PRY Polyclonal antibody

Catalog Number: 24688-1-AP



Basic Information

Catalog Number: 24688-1-AP	GenBank Accession Number: BC153128	Purification Method: Antigen affinity purification
Size: 150ul , Concentration: 650 ug/ml by Nanodrop and 440 ug/ml by Bradford method using BSA as the standard;	GeneID (NCBI): 442862	Recommended Dilutions: WB 1:500-1:1000 IHC 1:50-1:500 IF/ICC 1:200-1:800
Source: Rabbit	UNIPROT ID: O14603	
Isotype: IgG	Full Name: PTPN13-like, Y-linked 2	
Immunogen Catalog Number: AG20232	Calculated MW: 147 aa, 17 kDa	

Applications

Tested Applications: WB, IHC, IF/ICC, ELISA	Positive Controls:
Species Specificity: human	WB : human testis tissue,
Note-IHC: suggested antigen retrieval with TE buffer pH 9.0; (*) Alternatively, antigen retrieval may be performed with citrate buffer pH 6.0	IHC : human prostate cancer tissue,
	IF/ICC : PC-3 cells,

Background Information

PRY is Testis-specific PTP-BL-related Y protein which has two isoforms with MW 16 and 6-8 kDa.

Storage

Storage:
Store at -20°C. Stable for one year after shipment.
Storage Buffer:
PBS with 0.02% sodium azide and 50% glycerol, pH7.3
Aliquoting is unnecessary for -20°C storage

*** 20ul sizes contain 0.1% BSA

For technical support and original validation data for this product please contact:
T: 1 (888) 4PTGLAB (1-888-478-4522) (toll free in USA), or 1(312) 455-8498 (outside USA)
E: proteintech@ptglab.com
W: ptglab.com

This product is exclusively available under Proteintech Group brand and is not available to purchase from any other manufacturer.

Selected Validation Data



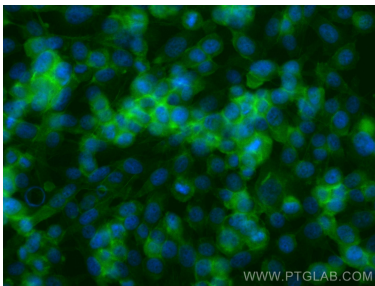
human testis tissue were subjected to SDS PAGE followed by western blot with 24688-1-AP (PRY antibody at dilution of 1:600 incubated at room temperature for 1.5 hours.



Immunohistochemical analysis of paraffin-embedded human prostate cancer tissue slide using 24688-1-AP (PRY antibody at dilution of 1:200 (under 10x lens).



Immunohistochemical analysis of paraffin-embedded human prostate cancer tissue slide using 24688-1-AP (PRY antibody at dilution of 1:200 (under 40x lens).



Immunofluorescent analysis of (-20°C Ethanol) fixed PC-3 cells using PRY antibody (24688-1-AP) at dilution of 1:400 and Coralite®594-Conjugated Goat Anti-Rabbit IgG(H+L) (SA00013-4).