

For Research Use Only

# CCDC99 Polyclonal antibody

Catalog Number: 24689-1-AP

Featured Product

2 Publications



## Basic Information

### Catalog Number:

24689-1-AP

### Size:

150ul, Concentration: 600 ug/ml by Nanodrop and 280 ug/ml by Bradford method using BSA as the standard;

### Source:

Rabbit

### Isotype:

IgG

### Immunogen Catalog Number:

AG20430

### GenBank Accession Number:

BC012568

### GeneID (NCBI):

54908

### UNIPROT ID:

Q96EA4

### Full Name:

coiled-coil domain containing 99

### Calculated MW:

605 aa, 70 kDa

### Observed MW:

70 kDa

### Purification Method:

Antigen affinity purification

### Recommended Dilutions:

WB 1:1000-1:4000

IP 0.5-4.0 ug for 1.0-3.0 mg of total protein lysate

IHC 1:50-1:500

## Applications

### Tested Applications:

WB, IP, IHC, ELISA

### Cited Applications:

WB, IF

### Species Specificity:

human

### Cited Species:

human

**Note-IHC: suggested antigen retrieval with TE buffer pH 9.0; (\*) Alternatively, antigen retrieval may be performed with citrate buffer pH 6.0**

### Positive Controls:

WB : HEK-293 cells, HeLa cells, HEK293 cells

IP : HEK-293 cells,

IHC : human liver cancer tissue,

## Notable Publications

Author	Pubmed ID	Journal	Application
Sanna Abbasi	33799447	Cells	WB, IF
Tao Liu	39196978	PLoS One	WB

## Storage

### Storage:

Store at -20°C. Stable for one year after shipment.

### Storage Buffer:

PBS with 0.02% sodium azide and 50% glycerol, pH7.3

Aliquoting is unnecessary for -20°C storage

\*\*\* 20ul sizes contain 0.1% BSA

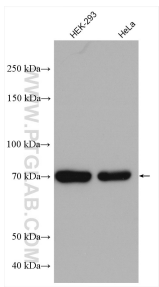
For technical support and original validation data for this product please contact:

T: 1 (888) 4PTGLAB (1-888-478-4522) (toll free in USA), or 1(312) 455-8498 (outside USA)

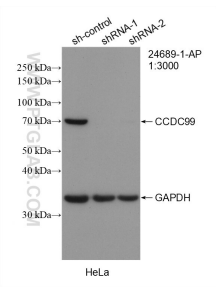
E: [proteintech@ptglab.com](mailto:proteintech@ptglab.com)  
W: [ptglab.com](http://ptglab.com)

This product is exclusively available under Proteintech Group brand and is not available to purchase from any other manufacturer.

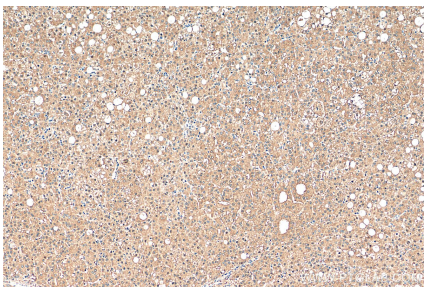
Selected Validation Data



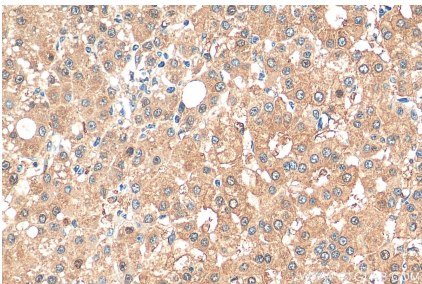
Various lysates were subjected to SDS PAGE followed by western blot with 24689-1-AP (CCDC99 antibody) at dilution of 1:2000 incubated at room temperature for 1.5 hours.



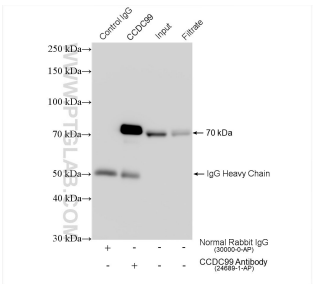
WB result of CCDC99 antibody (24689-1-AP; 1:3000; incubated at room temperature for 1.5 hours) with sh-Control and sh-CCDC99 transfected HeLa cells.



Immunohistochemical analysis of paraffin-embedded human liver cancer tissue slide using 24689-1-AP (CCDC99 antibody) at dilution of 1:200 (under 10x lens). Heat mediated antigen retrieval with Tris-EDTA buffer (pH 9.0).



Immunohistochemical analysis of paraffin-embedded human liver cancer tissue slide using 24689-1-AP (CCDC99 antibody) at dilution of 1:200 (under 40x lens). Heat mediated antigen retrieval with Tris-EDTA buffer (pH 9.0).



IP result of anti-CCDC99 (IP:24689-1-AP, 4ug; Detection:24689-1-AP 1:2000) with HEK-293 cells lysate 1400 ug.