

For Research Use Only

C5orf26 Polyclonal antibody

Catalog Number: 24698-1-AP

3 Publications



Basic Information

Catalog Number:

24698-1-AP

Size:

150ul, Concentration: 750 ug/ml by Nanodrop and 447 ug/ml by Bradford method using BSA as the standard;

Source:

Rabbit

Isotype:

IgG

Immunogen Catalog Number:

AG20367

GenBank Accession Number:

BC112077

GeneID (NCBI):

114915

Full Name:

chromosome 5 open reading frame 26

Calculated MW:

120 aa, 13 kDa

Purification Method:

Antigen affinity purification

Recommended Dilutions:

IHC 1:20-1:200

IF/ICC 1:50-1:500

Applications

Tested Applications:

IHC, IF/ICC, ELISA

Cited Applications:

WB, IHC

Species Specificity:

human

Cited Species:

human

Note-IHC: suggested antigen retrieval with TE buffer pH 9.0; (*) Alternatively, antigen retrieval may be performed with citrate buffer pH 6.0

Positive Controls:

IHC : human liver cancer tissue, human brain tissue

IF/ICC : HepG2 cells, HeLa cells

Notable Publications

Author	Pubmed ID	Journal	Application
Yuanchang Zhu	31671345	Mol Ther Nucleic Acids	WB
Weijie Liao	35184403	Clin Transl Med	WB
Meijian Liao	30796006	EBioMedicine	IHC

Storage

Storage:

Store at -20°C. Stable for one year after shipment.

Storage Buffer:

PBS with 0.02% sodium azide and 50% glycerol pH 7.3.

Aliquoting is unnecessary for -20°C storage

*** 20ul sizes contain 0.1% BSA

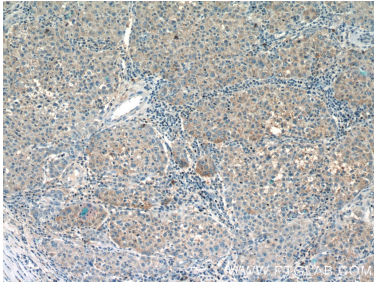
For technical support and original validation data for this product please contact:

T: 1 (888) 4PTGLAB (1-888-478-4522) (toll free in USA), or 1(312) 455-8498 (outside USA)

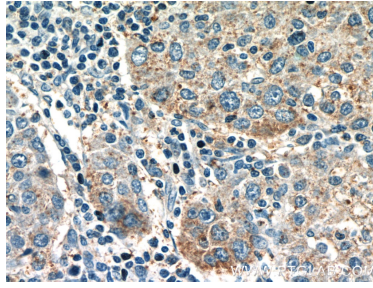
E: proteintech@ptglab.com
W: ptglab.com

This product is exclusively available under Proteintech Group brand and is not available to purchase from any other manufacturer.

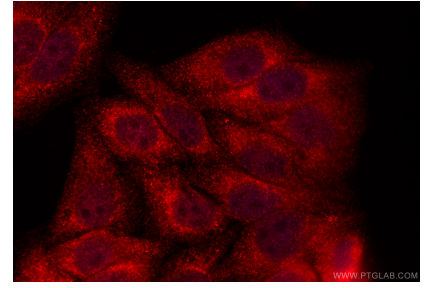
Selected Validation Data



Immunohistochemical analysis of paraffin-embedded human liver cancer slide using 24698-1-AP (C5orf26 Antibody) at dilution of 1:50 (under 10x lens).



Immunohistochemical analysis of paraffin-embedded human liver cancer slide using 24698-1-AP (C5orf26 Antibody) at dilution of 1:50 (under 40x lens).



Immunofluorescent analysis of (4% PFA) fixed HepG2 cells using C5orf26 antibody (24698-1-AP) at dilution of 1:200 and CoraLite®594-Conjugated Goat Anti-Rabbit IgG(H+L) (SA00013-4).