

For Research Use Only

LPLUNC1 Polyclonal antibody

Catalog Number: 24699-1-AP



Basic Information

Catalog Number: 24699-1-AP	GenBank Accession Number: BC008429	Purification Method: Antigen affinity purification
Size: 150ul , Concentration: 330 ug/ml by Nanodrop;	GeneID (NCBI): 92747	Recommended Dilutions: WB: 1:2000-1:10000
Source: Rabbit	UNIPROT ID: Q8TDL5	
Isotype: IgG	Full Name: chromosome 20 open reading frame 114	
Immunogen Catalog Number: AG20056	Calculated MW: 484 aa, 52 kDa	
	Observed MW: 50 kDa	

Applications

Tested Applications: WB, ELISA	Positive Controls: WB : human saliva,
Species Specificity: human	

Background Information

LPLUNC1 (Long Palate, Lung and Nasal Epithelium Carcinoma-Associated Protein 1) is a member of the PLUNC protein family and is a secretory protein primarily expressed in the mucosal epithelium of the respiratory tract. As a key component of innate immunity, LPLUNC1 exhibits antimicrobial activity by directly binding to lipopolysaccharides and inhibiting bacterial growth. Recent studies have revealed that LPLUNC1 expression is significantly downregulated in various tumors, including nasopharyngeal carcinoma and lung cancer. It exerts tumor-suppressive effects by regulating signaling pathways such as NF- κ B and STAT3, thereby inhibiting tumor cell proliferation and promoting apoptosis. Its expression level is closely associated with tumor stage and prognosis, making it a potential diagnostic biomarker and therapeutic target for cancer.

Storage

Storage:
Store at -20°C. Stable for one year after shipment.
Storage Buffer:
PBS with 0.02% sodium azide and 50% glycerol, pH7.3
Aliquoting is unnecessary for -20°C storage

*** 20ul sizes contain 0.1% BSA

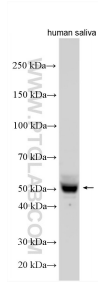
For technical support and original validation data for this product please contact:

T: 1 (888) 4PTGLAB (1-888-478-4522) (toll free in USA), or 1(312) 455-8498 (outside USA)

E: proteintech@ptglab.com
W: ptglab.com

This product is exclusively available under Proteintech Group brand and is not available to purchase from any other manufacturer.

Selected Validation Data



Various lysates were subjected to SDS PAGE followed by western blot with 24699-1-AP (LPLUNC1 antibody) at dilution of 1:5000 incubated at room temperature for 1.5 hours.