

For Research Use Only

HELB Polyclonal antibody

Catalog Number: 24700-1-AP



Basic Information

Catalog Number:

24700-1-AP

Size:

150ul , Concentration: 500 ug/ml by Nanodrop and 267 ug/ml by Bradford method using BSA as the standard;

Source:

Rabbit

Isotype:

IgG

Immunogen Catalog Number:

AG20335

GenBank Accession Number:

BC157019

GeneID (NCBI):

92797

UNIPROT ID:

Q8NG08

Full Name:

helicase (DNA) B

Calculated MW:

1087 aa, 123 kDa

Observed MW:

120-140 kDa

Purification Method:

Antigen affinity purification

Recommended Dilutions:

WB 1:500-1:2000

IP 0.5-4.0 ug for 1.0-3.0 mg of total protein lysate

IF/ICC 1:600-1:2400

Applications

Tested Applications:

WB, IF/ICC, IP, ELISA

Species Specificity:

human

Positive Controls:

WB : Jurkat cells, HEK-293 cells, HeLa cells

IP : HEK-293 cells,

IF/ICC : HeLa cells,

Storage

Storage:

Store at -20°C. Stable for one year after shipment.

Storage Buffer:

PBS with 0.02% sodium azide and 50% glycerol pH 7.3.

Aliquoting is unnecessary for -20°C storage

*** 20ul sizes contain 0.1% BSA

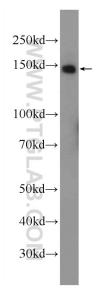
For technical support and original validation data for this product please contact:

T: 1 (888) 4PTGLAB (1-888-478-4522) (toll free in USA), or 1(312) 455-8498 (outside USA)

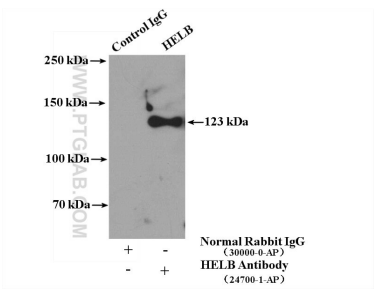
E: proteintech@ptglab.com
W: ptglab.com

This product is exclusively available under Proteintech Group brand and is not available to purchase from any other manufacturer.

Selected Validation Data



Jurkat cells were subjected to SDS PAGE followed by western blot with 24700-1-AP (HELB Antibody) at dilution of 1:1000 incubated at room temperature for 1.5 hours.



IP result of anti-HELB (IP:24700-1-AP, 4ug; Detection:24700-1-AP 1:1000) with HEK-293 cells lysate 3000ug.



Immunofluorescent analysis of (4% PFA) fixed HeLa cells using HELB antibody (24700-1-AP) at dilution of 1:1200 and CoraLite®488-Conjugated Goat Anti-Rabbit IgG(H+L) (SA00013-2), CL594-phalloidin (red).