

For Research Use Only

C14orf138 Polyclonal antibody

Catalog Number: 24722-1-AP



Basic Information

| | | |
|--|---|--|
| Catalog Number: 24722-1-AP | GenBank Accession Number: BC105118 | Purification Method: Antigen affinity purification |
| Size: 150ul , Concentration: 240 ug/ml by Nanodrop and 167 ug/ml by Bradford method using BSA as the standard; | GeneID (NCBI): 79609 | Recommended Dilutions: WB 1:200-1:1000 IHC 1:50-1:500 |
| Source: Rabbit | UNIPROT ID: Q9H867 | |
| Isotype: IgG | Full Name: chromosome 14 open reading frame 138 | |
| Immunogen Catalog Number: AG20154 | Calculated MW: 229 aa, 26 kDa | |
| | Observed MW: 45-50 kDa | |

Applications

| | |
|---|--|
| Tested Applications: WB, IHC, ELISA | Positive Controls: |
| Species Specificity: human, mouse | WB : PC-3 cells, HepG2 cells, human testis tissue |
| Note-IHC: suggested antigen retrieval with TE buffer pH 9.0; (*) Alternatively, antigen retrieval may be performed with citrate buffer pH 6.0 | IHC : mouse testis tissue, |

Background Information

C14orf138, also named as VCPKMT or METTL21D, is 229 amino acid protein, which belongs to the methyltransferase superfamily. C14orf138 localizes in the cytoplasm and interacts with ALKBH6. C14orf138 as a Protein-lysine N-methyltransferase that specifically trimethylates 'Lys-315' of VCP/p97; this modification may decrease VCP ATPase activity. C14orf138 exists as five isoforms. The calculated molecular weight of C14orf138 is 26 kDa, but we always detected a 46-50 kDa protein by western blot.

Storage

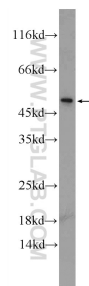
Storage:
Store at -20°C. Stable for one year after shipment.
Storage Buffer:
PBS with 0.02% sodium azide and 50% glycerol pH 7.3.
Aliquoting is unnecessary for -20°C storage

*** 20ul sizes contain 0.1% BSA

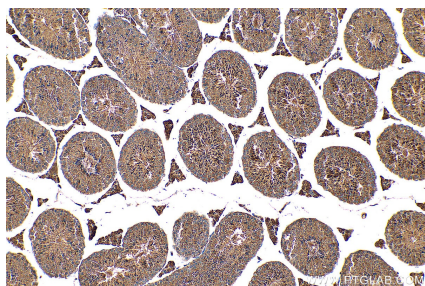
For technical support and original validation data for this product please contact:
T: 1 (888) 4PTGLAB (1-888-478-4522) (toll free in USA), or 1(312) 455-8498 (outside USA)
E: proteintech@ptglab.com
W: ptglab.com

This product is exclusively available under Proteintech Group brand and is not available to purchase from any other manufacturer.

Selected Validation Data



PC-3 cells were subjected to SDS PAGE followed by western blot with 24722-1-AP (C14orf138 Antibody) at dilution of 1:300 incubated at room temperature for 1.5 hours.



Immunohistochemical analysis of paraffin-embedded mouse testis tissue slide using 24722-1-AP (C14orf138 antibody) at dilution of 1:200 (under 10x lens). Heat mediated antigen retrieval with Tris-EDTA buffer (pH 9.0).