

For Research Use Only

EFTUD1 Polyclonal antibody, PBS Only

Catalog Number: 24729-1-PBS



Basic Information

Catalog Number:

24729-1-PBS

Size:

100ug, Concentration: 1 mg/ml by Nanodrop;

Source:

Rabbit

Isotype:

IgG

Immunogen Catalog Number:

AG20371

GenBank Accession Number:

BC156743

GeneID (NCBI):

79631

UNIPROT ID:

Q7Z2Z2

Full Name:

elongation factor Tu GTP binding domain containing 1

Calculated MW:

1120 aa, 125 kDa

Observed MW:

125-135 kDa

Purification Method:

Antigen affinity purification

Applications

Tested Applications:

WB, IHC, Indirect ELISA

Species Specificity:

human, mouse, rat

Storage

Storage:

Store at -80°C.

Storage Buffer:

PBS only, pH7.3

For technical support and original validation data for this product please contact:

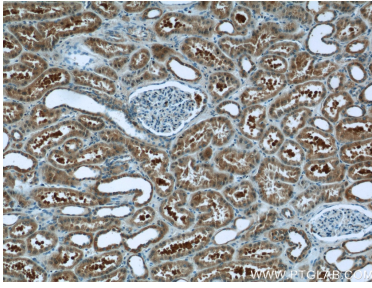
T: 1 (888) 4PTGLAB (1-888-478-4522) (toll free in USA), or 1(312) 455-8498 (outside USA)

E: proteintech@ptglab.com

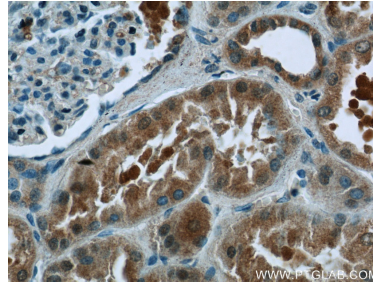
W: ptglab.com

This product is exclusively available under Proteintech Group brand and is not available to purchase from any other manufacturer.

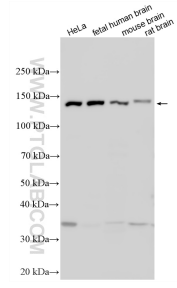
Selected Validation Data



Immunohistochemical analysis of paraffin-embedded human kidney tissue slide using 24729-1-AP (EFTUD1 Antibody) at dilution of 1:50 (under 10x lens). This data was developed using the same antibody clone with 24729-1-PBS in a different storage buffer formulation.



Immunohistochemical analysis of paraffin-embedded human kidney tissue slide using 24729-1-AP (EFTUD1 Antibody) at dilution of 1:50 (under 40x lens). This data was developed using the same antibody clone with 24729-1-PBS in a different storage buffer formulation.



Various lysates were subjected to SDS PAGE followed by western blot with 24729-1-AP (EFTUD1 antibody) at dilution of 1:4000 incubated at room temperature for 1.5 hours. This data was developed using the same antibody clone with 24729-1-PBS in a different storage buffer formulation.