

For Research Use Only

RSBN1 Polyclonal antibody

Catalog Number: 24734-1-AP



Basic Information

Catalog Number: 24734-1-AP	GenBank Accession Number: BC026155	Purification Method: Antigen affinity purification
Size: 150ul , Concentration: 400 ug/ml by Nanodrop;	GeneID (NCBI): 54665	Recommended Dilutions: WB: 1:500-1:2000 IF/ICC: 1:200-1:800
Source: Rabbit	UNIPROT ID: Q5VWQ0	
Isotype: IgG	Full Name: round spermatid basic protein 1	
Immunogen Catalog Number: AG20895	Calculated MW: 411 aa, 46 kDa	
	Observed MW: 90 kDa	

Applications

Tested Applications: WB, IF/ICC, ELISA	Positive Controls: WB : HeLa cells, Jurkat cells, PC-3 cells IF/ICC : HeLa cells, A431 cells
Species Specificity: human	

Background Information

RSBN1 is expressed not only in the testes, but also in the brain and ovaries. RSBN1 could play a role in both meiotic and post-meiotic progression, suggesting that it may also be involved in oogenesis. On the other hand, RSBN1 may be involved in brain development and function, as well as the regulation of neuronal cells, since another H4K20 demethylase, PHF8, regulates neuronal cell survival and brain development, while LSD1 regulates memory formation (PMID: 20622853, 26214369, 34185806).

Storage

Storage:
Store at -20°C. Stable for one year after shipment.
Storage Buffer:
PBS with 0.02% sodium azide and 50% glycerol, pH7.3
Aliquoting is unnecessary for -20°C storage

*** 20ul sizes contain 0.1% BSA

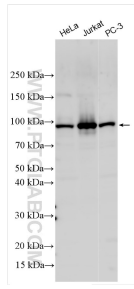
For technical support and original validation data for this product please contact:

T: 1 (888) 4PTGLAB (1-888-478-4522) (toll free in USA), or 1(312) 455-8498 (outside USA)

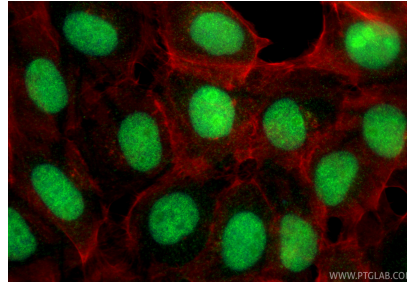
E: proteintech@ptglab.com
W: ptglab.com

This product is exclusively available under Proteintech Group brand and is not available to purchase from any other manufacturer.

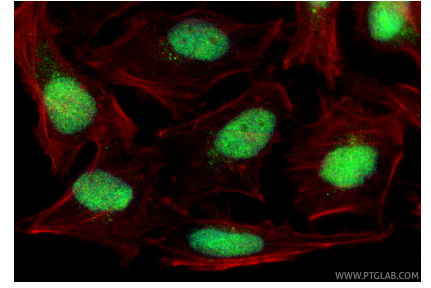
Selected Validation Data



Various lysates were subjected to SDS PAGE followed by western blot with 24734-1-AP (RSBN1 antibody) at dilution of 1:1000 incubated at room temperature for 1.5 hours.



Immunofluorescent analysis of (4% PFA) fixed A431 cells using RSBN1 antibody (24734-1-AP) at dilution of 1:400 and CoraLite®488-Conjugated Goat Anti-Rabbit IgG(H+L) (SA00013-2), CL594-Phalloidin (red).



Immunofluorescent analysis of (4% PFA) fixed HeLa cells using RSBN1 antibody (24734-1-AP) at dilution of 1:400 and CoraLite®488-Conjugated Goat Anti-Rabbit IgG(H+L) (SA00013-2), CL594-Phalloidin (red).