

For Research Use Only

# RSBN1 Polyclonal antibody, PBS Only

Catalog Number: 24734-1-PBS



## Basic Information

Catalog Number:

24734-1-PBS

Size:

100ug, Concentration: 1 mg/ml by Nanodrop;

Source:

Rabbit

Isotype:

IgG

Immunogen Catalog Number:

AG20895

GenBank Accession Number:

BC026155

GeneID (NCBI):

54665

UNIPROT ID:

Q5VWQ0

Full Name:

round spermatid basic protein 1

Calculated MW:

411 aa, 46 kDa

Observed MW:

90 kDa

Purification Method:

Antigen affinity purification

## Applications

Tested Applications:

WB, IF/ICC, Indirect ELISA

Species Specificity:

human

## Background Information

RSBN1 is expressed not only in the testes, but also in the brain and ovaries. RSBN1 could play a role in both meiotic and post-meiotic progression, suggesting that it may also be involved in oogenesis. On the other hand, RSBN1 may be involved in brain development and function, as well as the regulation of neuronal cells, since another H4K20 demethylase, PHF8, regulates neuronal cell survival and brain development, while LSD1 regulates memory formation (PMID: 20622853, 26214369, 34185806).

## Storage

Storage:

Store at -80°C.

Storage Buffer:

PBS only, pH7.3

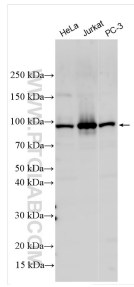
For technical support and original validation data for this product please contact:

T: 1 (888) 4PTGLAB (1-888-478-4522) (toll free in USA), or 1(312) 455-8498 (outside USA)

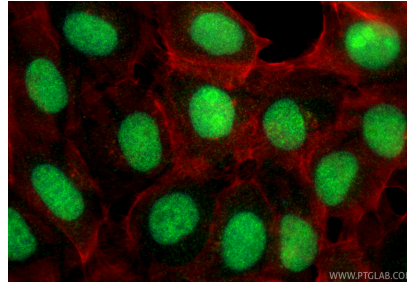
E: [proteintech@ptglab.com](mailto:proteintech@ptglab.com)  
W: [ptglab.com](http://ptglab.com)

This product is exclusively available under Proteintech Group brand and is not available to purchase from any other manufacturer.

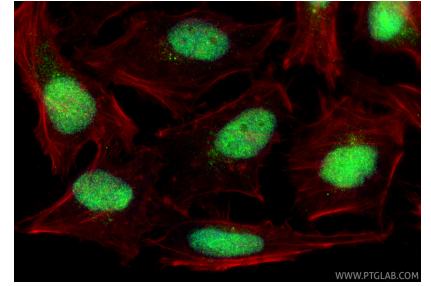
## Selected Validation Data



Various lysates were subjected to SDS PAGE followed by western blot with 24734-1-AP (RSBN1 antibody) at dilution of 1:1000 incubated at room temperature for 1.5 hours. This data was developed using the same antibody clone with 24734-1-PBS in a different storage buffer formulation.



Immunofluorescent analysis of (4% PFA) fixed A431 cells using RSBN1 antibody (24734-1-AP) at dilution of 1:400 and CoraLite@488-Conjugated Goat Anti-Rabbit IgG(H+L) (SA00013-2), CL594-Phalloidin (red). This data was developed using the same antibody clone with 24734-1-PBS in a different storage buffer formulation.



Immunofluorescent analysis of (4% PFA) fixed HeLa cells using RSBN1 antibody (24734-1-AP) at dilution of 1:400 and CoraLite@488-Conjugated Goat Anti-Rabbit IgG(H+L) (SA00013-2), CL594-Phalloidin (red). This data was developed using the same antibody clone with 24734-1-PBS in a different storage buffer formulation.