

For Research Use Only

ODF1 Polyclonal antibody

Catalog Number: 24736-1-AP

4 Publications



Basic Information

Catalog Number:

24736-1-AP

Size:

150ul, Concentration: 550 ug/ml by Nanodrop and 353 ug/ml by Bradford method using BSA as the standard;

Source:

Rabbit

Isotype:

IgG

Immunogen Catalog Number:

AG20562

GenBank Accession Number:

BC104457

GeneID (NCBI):

4956

UNIPROT ID:

Q14990

Full Name:

outer dense fiber of sperm tails 1

Calculated MW:

250 aa, 28 kDa

Observed MW:

28 kDa, 56 kDa

Purification Method:

Antigen affinity purification

Recommended Dilutions:

WB 1:500-1:1000

IHC 1:20-1:200

Applications

Tested Applications:

WB, IHC, ELISA

Cited Applications:

WB

Species Specificity:

human, rat, mouse

Cited Species:

human, mouse, pig

Note-IHC: suggested antigen retrieval with TE buffer pH 9.0; (*) Alternatively, antigen retrieval may be performed with citrate buffer pH 6.0

Positive Controls:

WB : rat testis tissue, mouse testis tissue

IHC : human testis tissue,

Background Information

ODF1, also named as Outer dense fiber protein 1, is a 250 amino acid protein, which contains the C-terminal contains many C-X-P repeats. ODF1 is a component of the outer dense fibers (ODF) of spermatozoa. ODF27 that suggested the possibility of inter- actions between ODF27 itself and/or between ODF27 and other sperm tail proteins.

Notable Publications

Author	Pubmed ID	Journal	Application
Hua Nie	35860846	Mol Genet Genomic Med	WB
Yongjie Xu	34336820	Front Cell Dev Biol	WB
Xinying Cai	39516485	Cell Death Dis	WB

Storage

Storage:

Store at -20°C. Stable for one year after shipment.

Storage Buffer:

PBS with 0.02% sodium azide and 50% glycerol pH 7.3.

Aliquoting is unnecessary for -20°C storage

*** 20ul sizes contain 0.1% BSA

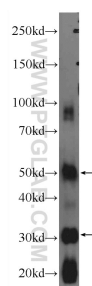
For technical support and original validation data for this product please contact:

T: 1 (888) 4PTGLAB (1-888-478-4522) (toll free in USA), or 1(312) 455-8498 (outside USA)

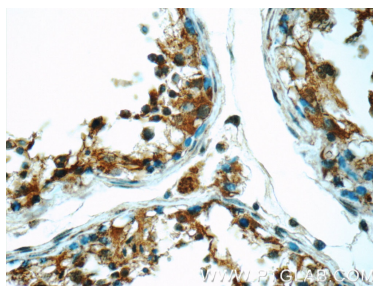
E: proteintech@ptglab.com
W: ptglab.com

This product is exclusively available under Proteintech Group brand and is not available to purchase from any other manufacturer.

Selected Validation Data



rat testis tissue were subjected to SDS PAGE followed by western blot with 24736-1-AP (ODF1 Antibody) at dilution of 1:600 incubated at room temperature for 1.5 hours.



Immunohistochemical analysis of paraffin-embedded human testis tissue slide using 24736-1-AP (ODF1 Antibody) at dilution of 1:50 (under 40x lens).