

For Research Use Only

# ACE Polyclonal antibody, PBS Only

Catalog Number: 24743-1-PBS



## Basic Information

Catalog Number:

24743-1-PBS

Size:

100ug, Concentration: 1 mg/ml by Nanodrop;

Source:

Rabbit

Isotype:

IgG

Immunogen Catalog Number:

AG20654

GenBank Accession Number:

BC036375

GeneID (NCBI):

1636

UNIPROT ID:

P12821

Full Name:

angiotensin I converting enzyme (peptidyl-dipeptidase A) 1

Calculated MW:

150 kDa

Observed MW:

170 kDa

Purification Method:

Antigen affinity purification

## Applications

Tested Applications:

WB, IHC, Indirect ELISA

Species Specificity:

human, mouse, rat

## Background Information

ACE (Angiotensin-converting enzyme) is also named as DCP, DCP1 and belongs to the peptidase M2 family. It is involved in catalyzing the conversion of angiotensin I into a physiologically active peptide angiotensin II. ACE also has a glycosidase activity which releases GPI-anchored proteins from the membrane by cleaving the mannose linkage in the GPI moiety. It has 4 isoforms produced by alternative splicing. The full length protein has 15 glycosylation sites and it can show a molecular weight of 170 kDa (PMID:16804085).

## Storage

Storage:

Store at -80°C.

Storage Buffer:

PBS Only

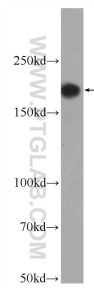
For technical support and original validation data for this product please contact:

T: 1 (888) 4PTGLAB (1-888-478-4522) (toll free in USA), or 1(312) 455-8498 (outside USA)

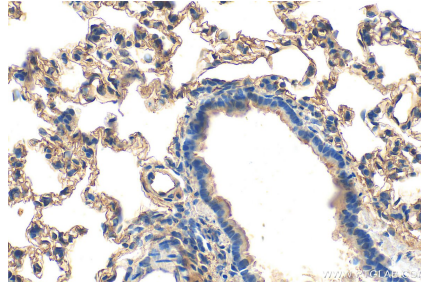
E: [proteintech@ptglab.com](mailto:proteintech@ptglab.com)  
W: [ptglab.com](http://ptglab.com)

**This product is exclusively available under Proteintech Group brand and is not available to purchase from any other manufacturer.**

## Selected Validation Data



mouse heart tissue were subjected to SDS PAGE followed by western blot with 24743-1-AP (ACE Antibody) at dilution of 1:1000 incubated at room temperature for 1.5 hours. This data was developed using the same antibody clone with 24743-1-PBS in a different storage buffer formulation.



Immunohistochemical analysis of paraffin-embedded rat lung tissue slide using 24743-1-AP (ACE antibody) at dilution of 1:200 (under 40x lens). Heat mediated antigen retrieval with Tris-EDTA buffer (pH 9.0). This data was developed using the same antibody clone with 24743-1-PBS in a different storage buffer formulation.