

For Research Use Only

YTHDF2 Polyclonal antibody, PBS Only

Catalog Number: 24744-1-PBS

Featured Product



Basic Information

Catalog Number:

24744-1-PBS

Size:

100ug, Concentration: 1 mg/ml by Nanodrop;

Source:

Rabbit

Isotype:

IgG

Immunogen Catalog Number:

AG5922

GenBank Accession Number:

BC002559

GeneID (NCBI):

51441

UNIPROT ID:

Q9Y5A9

Full Name:

YTH domain family, member 2

Calculated MW:

62 kDa

Observed MW:

62 kDa

Purification Method:

Antigen affinity purification

Applications

Tested Applications:

WB, IHC, IF/ICC, IF-P, IP, ELISA

Species Specificity:

human, mouse, rat

Background Information

YTHDF2 also named as CLL associated antigen KW 14 or HGRG8 is a 579 amino acid protein, which contains one YTH domain and exists as two alternatively spliced isoforms. YTHDF2 is expressed in in pancreas, testis and placenta. YTHDF2 may play a role in human longevity. Due to the high sequence similarity, 24744-1-AP is likely to cross-react with both YTHDF1 and YTHDF3.

Storage

Storage:

Store at -80°C.

Storage Buffer:

PBS only, pH7.3

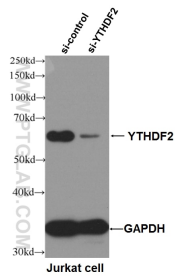
For technical support and original validation data for this product please contact:

T: 1 (888) 4PTGLAB (1-888-478-4522) (toll free in USA), or 1(312) 455-8498 (outside USA)

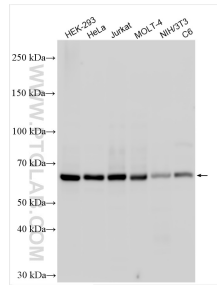
E: proteintech@ptglab.com
W: ptglab.com

This product is exclusively available under Proteintech Group brand and is not available to purchase from any other manufacturer.

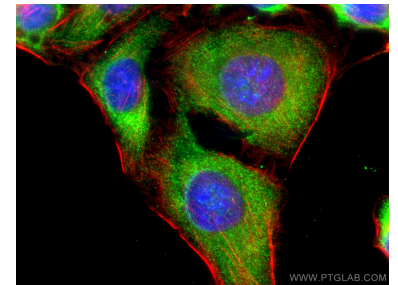
Selected Validation Data



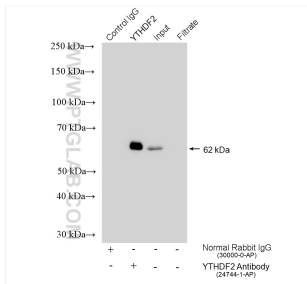
WB result of YTHDF2 antibody (24744-1-AP, 1:4000) with si-control and si-YTHDF2 transfected Jurkat cells. This data was developed using the same antibody clone with 24744-1-PBS in a different storage buffer formulation.



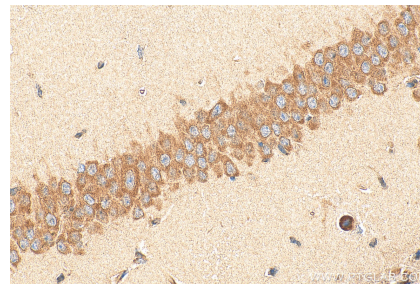
Various lysates were subjected to SDS PAGE followed by western blot with 24744-1-AP (YTHDF2 antibody) at dilution of 1:6000 incubated at room temperature for 1.5 hours. This data was developed using the same antibody clone with 24744-1-PBS in a different storage buffer formulation.



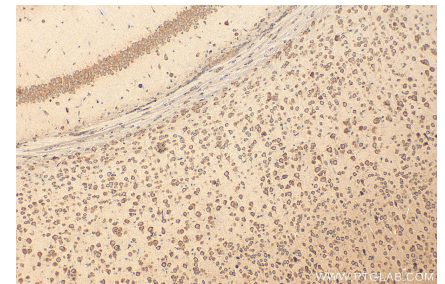
Immunofluorescent analysis of (-20°C Ethanol) fixed U2OS cells using YTHDF2 antibody (24744-1-AP) at dilution of 1:200 and CoraLite@488-Conjugated AffiniPure Goat Anti-Rabbit IgG(H+L), CL594-Phalloidin (red). This data was developed using the same antibody clone with 24744-1-PBS in a different storage buffer formulation.



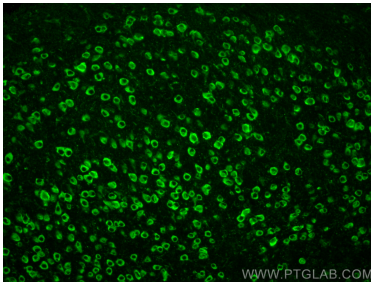
IP result of anti-YTHDF2 (IP:24744-1-AP, 4ug; Detection:24744-1-AP 1:6000) with HeLa cells lysate 1360 ug. This data was developed using the same antibody clone with 24744-1-PBS in a different storage buffer formulation.



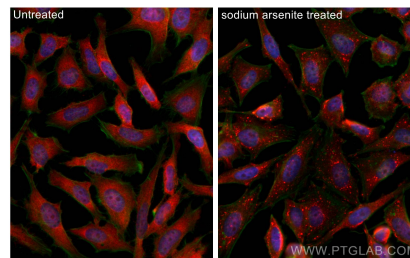
Immunohistochemical analysis of paraffin-embedded mouse brain tissue slide using 24744-1-AP (YTHDF2 antibody) at dilution of 1:400 (under 40x lens). Heat mediated antigen retrieval with Tris-EDTA buffer (pH 9.0). This data was developed using the same antibody clone with 24744-1-PBS in a different storage buffer formulation.



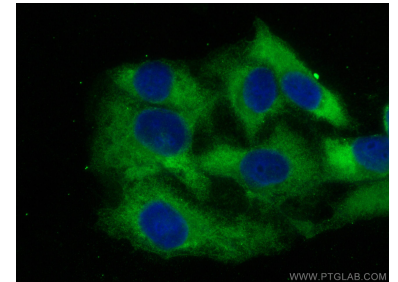
Immunohistochemical analysis of paraffin-embedded mouse brain tissue slide using 24744-1-AP (YTHDF2 antibody) at dilution of 1:400 (under 10x lens). Heat mediated antigen retrieval with Tris-EDTA buffer (pH 9.0). This data was developed using the same antibody clone with 24744-1-PBS in a different storage buffer formulation.



Immunofluorescent analysis of (4% PFA) fixed paraffin-embedded mouse brain tissue using YTHDF2 antibody (24744-1-AP) at dilution of 1:200 and Multi-rAb CoraLite @ Plus 488-Goat Anti-Rabbit Recombinant Secondary Antibody (H+L) (RGAR002). Heat mediated antigen retrieval with Tris-EDTA buffer (pH 9.0). This data was developed using the same antibody clone with 24744-1-PBS in a different storage buffer formulation.



Immunofluorescent analysis of (4% PFA) fixed sodium arsenite treated HeLa cells using YTHDF2 antibody (24744-1-AP) at dilution of 1:400 and CoraLite@594-Conjugated Goat Anti-Rabbit IgG(H+L) (SA00013-4), CL488-phalloidin (green). This data was developed using the same antibody clone with 24744-1-PBS in a different storage buffer formulation.



Immunofluorescent analysis of (-20°C Ethanol) fixed U2OS cells using YTHDF2 antibody (24744-1-AP) at dilution of 1:400 and CoraLite@488-Conjugated AffiniPure Goat Anti-Rabbit IgG(H+L), CL594-Phalloidin (red). This data was developed using the same antibody clone with 24744-1-PBS in a different storage buffer formulation.