

For Research Use Only

EGFL6 Polyclonal antibody

Catalog Number: 24748-1-AP



Basic Information

| | | |
|---|--|--|
| Catalog Number: 24748-1-AP | GenBank Accession Number: BC038587 | Purification Method: Antigen affinity purification |
| Size: 150ul , Concentration: 550 ug/ml by Nanodrop; | GeneID (NCBI): 25975 | Recommended Dilutions: WB 1:500-1:3000 |
| Source: Rabbit | UNIPROT ID: Q8IUX8 | |
| Isotype: IgG | Full Name: EGF-like-domain, multiple 6 | |
| Immunogen Catalog Number: AG21411 | Calculated MW: 61 kDa | |
| | Observed MW: 60 kDa | |

Applications

| | |
|--|--|
| Tested Applications: WB, ELISA | Positive Controls: WB : human placenta tissue, |
| Species Specificity: human | |

Background Information

Epidermal growth factor-like protein 6 (EGFL6) is a member of the epidermal growth factor (EGF) repeats protein superfamily which are predominantly secreted or cell surface molecules, often involved in the regulation of cell cycle, proliferation, and developmental processes (PMID: 10610727). EGFL6 is a secreted protein. It participates in a variety of physiological and pathological processes, including cell adhesion modulation, angiogenesis and tumor development (PMID: 36507067).

Storage

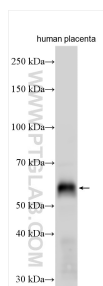
Storage:
Store at -20°C. Stable for one year after shipment.
Storage Buffer:
PBS with 0.02% sodium azide and 50% glycerol pH 7.3.
Aliquoting is unnecessary for -20°C storage

*** 20ul sizes contain 0.1% BSA

For technical support and original validation data for this product please contact:
T: 1 (888) 4PTGLAB (1-888-478-4522) (toll free in USA), or 1(312) 455-8498 (outside USA)
E: proteintech@ptglab.com
W: ptglab.com

This product is exclusively available under Proteintech Group brand and is not available to purchase from any other manufacturer.

Selected Validation Data



human placenta tissue was subjected to SDS PAGE followed by western blot with 24748-1-AP (EGFL6 antibody) at dilution of 1:1500 incubated at room temperature for 1.5 hours.