

For Research Use Only

WWC2 Polyclonal antibody

Catalog Number: 24750-1-AP **2 Publications**



Basic Information

Catalog Number: 24750-1-AP	GenBank Accession Number: BC017957	Purification Method: Antigen affinity purification
Size: 150ul, Concentration: 900 µg/ml by Nanodrop;	GeneID (NCBI): 80014	Recommended Dilutions: WB 1:1000-1:6000 IP 0.5-4.0 ug for 1.0-3.0 mg of total protein lysate IHC 1:20-1:200 IF 1:20-1:200
Source: Rabbit	Full Name: WW and C2 domain containing 2	
Isotype: IgG	Calculated MW: 1192 aa, 134 kDa	
Immunogen Catalog Number: AG20479	Observed MW: 150 kDa	

Applications

Tested Applications: IF, IHC, IP, WB, ELISA	Positive Controls: WB : mouse brain tissue, IP : HEK-293 cells, IHC : human kidney tissue, human testis tissue IF : HEK-293 cells,
Cited Applications: WB	
Species Specificity: human, mouse	
Cited Species: human, mouse	

Note-IHC: suggested antigen retrieval with TE buffer pH 9.0; (*) Alternatively, antigen retrieval may be performed with citrate buffer pH 6.0

Background Information

WWC2 also named as BOMB or WW and C2 domain containing 2 is 1192 amino acid protein, which contains 1 C2 domain and 2 WW domains. WWC2 localizes in cytoplasm and belongs to the WWC family. WWC2 exists as seven alternatively spliced isoforms and is encoded by a gene located on human chromosome 4q35.1. WWC2 may be expressed in liver, brain, prostate and kidney. The function of WWC2 is still non-known and need to be further studied.

Notable Publications

Author	Pubmed ID	Journal	Application
Feng Li	36484096	Nucleic Acids Res	WB
Hongmei Huang	38190957	Cell Signal	WB

Storage

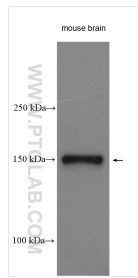
Storage:
Store at -20°C. Stable for one year after shipment.
Storage Buffer:
PBS with 0.02% sodium azide and 50% glycerol pH 7.3.
Aliquoting is unnecessary for -20°C storage

*** 20ul sizes contain 0.1% BSA

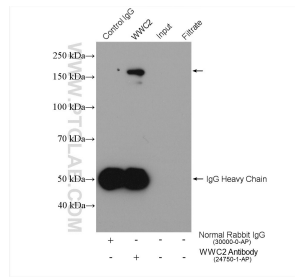
For technical support and original validation data for this product please contact:
T: 1 (888) 4PTGLAB (1-888-478-4522) (toll free in USA), or 1(312) 455-8498 (outside USA)
E: proteintech@ptglab.com
W: ptglab.com

This product is exclusively available under Proteintech Group brand and is not available to purchase from any other manufacturer.

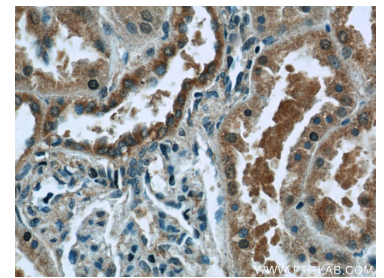
Selected Validation Data



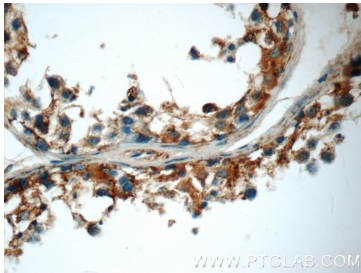
mouse brain tissue were subjected to SDS PAGE followed by western blot with 24750-1-AP (WWC2 antibody) at dilution of 1:3000 incubated at room temperature for 1.5 hours.



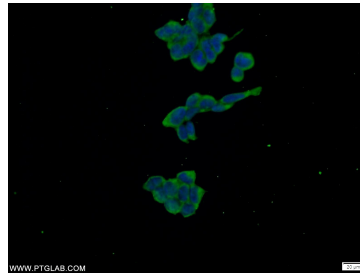
IP result of anti-WWC2(IP:24750-1-AP, 4ug; Detection:24750-1-AP 1:500) with HEK-293 cells lysate 1360 ug.



Immunohistochemical analysis of paraffin-embedded human kidney tissue slide using 24750-1-AP (WWC2 Antibody) at dilution of 1:50 (under 40x lens).



Immunohistochemical analysis of paraffin-embedded human testis tissue slide using 24750-1-AP (WWC2 Antibody) at dilution of 1:50 (under 40x lens).



Immunofluorescent analysis of HEK-293 cells using 24750-1-AP (WWC2 antibody) at dilution of 1:50 and Alexa Fluor 488-conjugated AffiniPure Goat Anti-Rabbit IgG(H+L).