

For Research Use Only

RPS6KL1 Polyclonal antibody

Catalog Number: 24757-1-AP



Basic Information

Catalog Number: 24757-1-AP	GenBank Accession Number: BC004540	Purification Method: Antigen affinity purification
Size: 150ul , Concentration: 600 ug/ml by Nanodrop and 327 ug/ml by Bradford method using BSA as the standard;	GeneID (NCBI): 83694	Recommended Dilutions: WB 1:500-1:1000 IHC 1:20-1:200
Source: Rabbit	UNIPROT ID: Q9Y6S9	
Isotype: IgG	Full Name: ribosomal protein S6 kinase-like 1	
Immunogen Catalog Number: AG15099	Calculated MW: 549 aa, 60 kDa	
	Observed MW: 59 kDa	

Applications

Tested Applications: WB, IHC, ELISA	Positive Controls:
Species Specificity: human, hamster	WB : CHO cells,
Note-IHC: suggested antigen retrieval with TE buffer pH 9.0; (*) Alternatively, antigen retrieval may be performed with citrate buffer pH 6.0	IHC : human testis tissue, human colon tissue

Storage

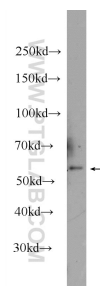
Storage:
Store at -20°C. Stable for one year after shipment.
Storage Buffer:
PBS with 0.02% sodium azide and 50% glycerol pH 7.3.
Aliquoting is unnecessary for -20°C storage

*** 20ul sizes contain 0.1% BSA

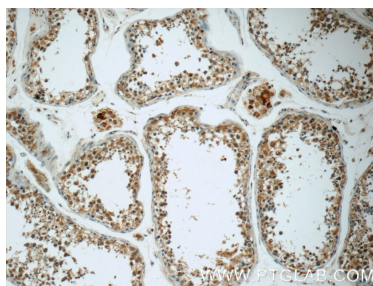
For technical support and original validation data for this product please contact:
T: 1 (888) 4PTGLAB (1-888-478-4522) (toll free in USA), or 1(312) 455-8498 (outside USA)
E: proteintech@ptglab.com
W: ptglab.com

This product is exclusively available under Proteintech Group brand and is not available to purchase from any other manufacturer.

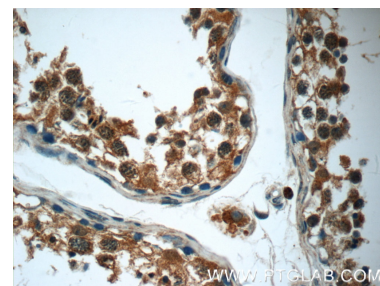
Selected Validation Data



CHO cells were subjected to SDS PAGE followed by western blot with 24757-1-AP (RPS6KL1 Antibody) at dilution of 1:600 incubated at room temperature for 1.5 hours.



Immunohistochemical analysis of paraffin-embedded human testis tissue slide using 24757-1-AP (RPS6KL1 Antibody) at dilution of 1:50 (under 10x lens).



Immunohistochemical analysis of paraffin-embedded human testis tissue slide using 24757-1-AP (RPS6KL1 Antibody) at dilution of 1:50 (under 40x lens).