

For Research Use Only

MATCHF1 Polyclonal antibody

Catalog Number: 24771-1-AP



Basic Information

Catalog Number:

24771-1-AP

Size:

150ul, Concentration: 500 ug/ml by Nanodrop and 247 ug/ml by Bradford method using BSA as the standard;

Source:

Rabbit

Isotype:

IgG

Immunogen Catalog Number:

AG20231

GenBank Accession Number:

BC153124

GeneID (NCBI):

55016

UNIPROT ID:

Q8TCQ1

Full Name:

membrane-associated ring finger

(C3HC4) 1

Calculated MW:

289 aa, 32 kDa

Observed MW:

60 kDa

Purification Method:

Antigen affinity purification

Recommended Dilutions:

WB 1:1000-1:4000

Applications

Tested Applications:

WB, ELISA

Species Specificity:

human, mouse, rat

Positive Controls:

WB : mouse brain tissue, rat brain tissue

Background Information

MARCH1 is mainly found in secondary lymphoid organs, more specifically in the endocytic pathway of dendritic cells (DCs) and B cells (11-15). MARCH1 reduces the half-life of peptide/MHC II complexes by causing their redistribution from recycling endosomes to lysosomes. MARCH1 homodimerizes and also forms heterodimers with others family members (PMID: 22508929).

Storage

Storage:

Store at -20°C. Stable for one year after shipment.

Storage Buffer:

PBS with 0.02% sodium azide and 50% glycerol pH 7.3.

Aliquoting is unnecessary for -20°C storage

*** 20ul sizes contain 0.1% BSA

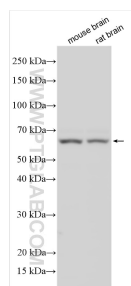
For technical support and original validation data for this product please contact:

T: 1 (888) 4PTGLAB (1-888-478-4522) (toll free in USA), or 1(312) 455-8498 (outside USA)

E: proteintech@ptglab.com
W: ptglab.com

This product is exclusively available under Proteintech Group brand and is not available to purchase from any other manufacturer.

Selected Validation Data



Various lysates were subjected to SDS PAGE followed by western blot with 24771-1-AP (MATCH1 antibody) at dilution of 1:2000 incubated at room temperature for 1.5 hours.