

For Research Use Only

SLC36A1 Polyclonal antibody

Catalog Number: 24775-1-AP

Featured Product

4 Publications



Basic Information

Catalog Number: 24775-1-AP	GenBank Accession Number: BC136437	Purification Method: Antigen affinity purification
Size: 150ul , Concentration: 1000 µg/ml by Nanodrop;	GeneID (NCBI): 206358	Recommended Dilutions: WB 1:500-1:1000
Source: Rabbit	Full Name: solute carrier family 36 (proton/amino acid symporter), member 1	
Isotype: IgG	Calculated MW: 476 aa, 53 kDa	
Immunogen Catalog Number: AG20594	Observed MW: 43-53 kDa	

Applications

Tested Applications: WB, ELISA	Positive Controls: WB : HeLa cells,
Cited Applications: WB	
Species Specificity: human	
Cited Species: human, mouse	

Background Information

Notable Publications

Author	Pubmed ID	Journal	Application
Kai Lu	31562534	J Gastroenterol	WB
Ludi Wang	38042221	Free Radic Biol Med	WB
Kedong Liu	37878752	ACS Appl Mater Interfaces	WB

Storage

Storage:
Store at -20°C. Stable for one year after shipment.
Storage Buffer:
PBS with 0.02% sodium azide and 50% glycerol pH 7.3.
Aliquoting is unnecessary for -20°C storage

*** 20ul sizes contain 0.1% BSA

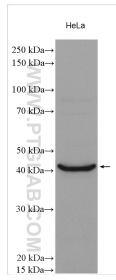
For technical support and original validation data for this product please contact:

T: 1 (888) 4PTGLAB (1-888-478-4522) (toll free in USA), or 1(312) 455-8498 (outside USA)

E: proteintech@ptglab.com
W: ptglab.com

This product is exclusively available under Proteintech Group brand and is not available to purchase from any other manufacturer.

Selected Validation Data



HeLa cells were subjected to SDS PAGE followed by western blot with 24775-1-AP (SLC36A 1 antibody) at dilution of 1:600 incubated at room temperature for 1.5 hours.