

For Research Use Only

Caspase 2/P18 Polyclonal antibody

Catalog Number: 24777-1-AP



Basic Information

Catalog Number: 24777-1-AP	GenBank Accession Number: BC002427	Purification Method: Antigen affinity purification
Size: 150ul , Concentration: 750 ug/ml by Nanodrop and 333 ug/ml by Bradford method using BSA as the standard;	GeneID (NCBI): 835	Recommended Dilutions: WB 1:500-1:1000 IHC 1:50-1:500 IF/ICC 1:20-1:200
Source: Rabbit	UNIPROT ID: P42575	
Isotype: IgG	Full Name: caspase 2, apoptosis-related cysteine peptidase	
Immunogen Catalog Number: AG20141	Calculated MW: 452 aa, 51 kDa	
	Observed MW: 48-51 kDa, 32 kDa	

Applications

Tested Applications: WB, IHC, IF/ICC, ELISA	Positive Controls: WB : HEK-293 cells, Jurkat cells, mouse kidney tissue
Species Specificity: human, mouse	IHC : human liver cancer tissue, human lung cancer tissue
Note-IHC: suggested antigen retrieval with TE buffer pH 9.0; (*) Alternatively, antigen retrieval may be performed with citrate buffer pH 6.0	IF/ICC : HEK-293 cells,

Background Information

CASP2(Caspase-2) is also named as ICH1, NEDD2 and belongs to the peptidase C14A family. It is involved in the activation cascade of caspases responsible for apoptosis execution and might function by either activating some proteins required for cell death or inactivating proteins necessary for cell survival. It has 2 isoforms produced by alternative splicing and can exist almost as a dimer in solution (PMID:15865942).

Storage

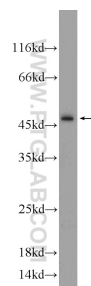
Storage:
Store at -20°C. Stable for one year after shipment.
Storage Buffer:
PBS with 0.02% sodium azide and 50% glycerol pH 7.3.
Aliquoting is unnecessary for -20°C storage

*** 20ul sizes contain 0.1% BSA

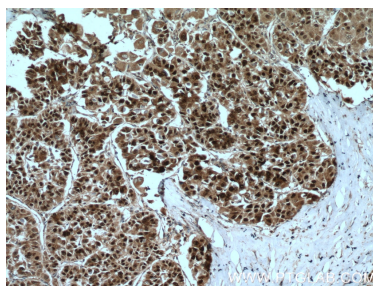
For technical support and original validation data for this product please contact:
T: 1 (888) 4PTGLAB (1-888-478-4522) (toll free in USA), or 1(312) 455-8498 (outside USA)
E: proteintech@ptglab.com
W: ptglab.com

This product is exclusively available under Proteintech Group brand and is not available to purchase from any other manufacturer.

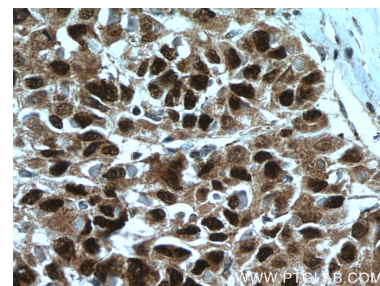
Selected Validation Data



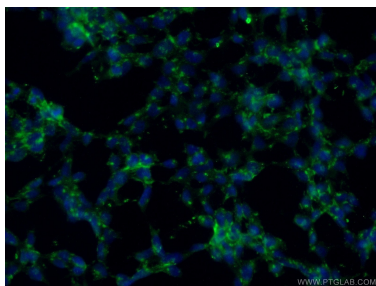
HEK-293 cells were subjected to SDS PAGE followed by western blot with 24777-1-AP (Caspase 2/p18 antibody at dilution of 1:600 incubated at room temperature for 1.5 hours.



Immunohistochemical analysis of paraffin-embedded human liver cancer tissue slide using 24777-1-AP (Caspase 2/p18 antibody) at dilution of 1:100 (under 10x lens. Heat mediated antigen retrieval with Tris-EDTA buffer (pH 9.0).



Immunohistochemical analysis of paraffin-embedded human liver cancer tissue slide using 24777-1-AP (Caspase 2/p18 antibody) at dilution of 1:100 (under 40x lens. Heat mediated antigen retrieval with Tris-EDTA buffer (pH 9.0).



Immunofluorescent analysis of (-20°C Ethanol) fixed HEK-293 cells using 24777-1-AP (Caspase 2/P18 antibody) at dilution of 1:50 and Alexa Fluor 488-conjugated AffiniPure Goat Anti-Rabbit IgG(H+L).