

For Research Use Only

# EMILIN2 Polyclonal antibody

Catalog Number: 24779-1-AP

1 Publications



## Basic Information

Catalog Number:

24779-1-AP

Size:

150ul, Concentration: 1000 ug/ml by Nanodrop and 487 ug/ml by Bradford method using BSA as the standard;

Source:

Rabbit

Isotype:

IgG

Immunogen Catalog Number:

AG20722

GenBank Accession Number:

BC136541

GeneID (NCBI):

84034

UNIPROT ID:

Q9BX00

Full Name:

elastin microfibril interfacier 2

Calculated MW:

1053 aa, 116 kDa

Purification Method:

Antigen affinity purification

Recommended Dilutions:

IHC 1:50-1:500

## Applications

Tested Applications:

IHC, ELISA

Cited Applications:

IHC

Species Specificity:

human

Cited Species:

human

**Note-IHC: suggested antigen retrieval with TE buffer pH 9.0; (\*) Alternatively, antigen retrieval may be performed with citrate buffer pH 6.0**

Positive Controls:

IHC : human lung cancer tissue,

## Notable Publications

Author	Pubmed ID	Journal	Application
Guohong Liu	37644433	J Transl Med	IHC

## Storage

Storage:

Store at -20°C. Stable for one year after shipment.

Storage Buffer:

PBS with 0.02% sodium azide and 50% glycerol pH 7.3.

Aliquoting is unnecessary for -20°C storage

\*\*\* 20ul sizes contain 0.1% BSA

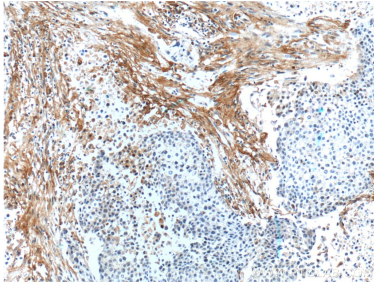
For technical support and original validation data for this product please contact:

T: 1 (888) 4PTGLAB (1-888-478-4522) (toll free in USA), or 1(312) 455-8498 (outside USA)

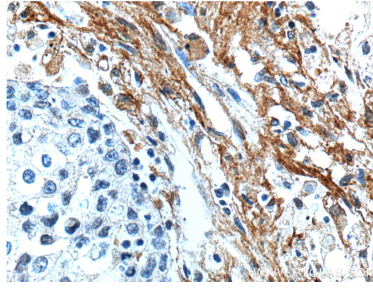
E: [proteintech@ptglab.com](mailto:proteintech@ptglab.com)  
W: [ptglab.com](http://ptglab.com)

This product is exclusively available under Proteintech Group brand and is not available to purchase from any other manufacturer.

## Selected Validation Data



Immunohistochemical analysis of paraffin-embedded human lung cancer tissue slide using 24779-1-AP (EMILIN2 Antibody) at dilution of 1:200 (under 10x lens).



Immunohistochemical analysis of paraffin-embedded human lung cancer tissue slide using 24779-1-AP (EMILIN2 Antibody) at dilution of 1:200 (under 40x lens).