

For Research Use Only

# KLHL31 Polyclonal antibody

Catalog Number: 24781-1-AP

Featured Product



## Basic Information

Catalog Number:

24781-1-AP

Size:

150ul, Concentration: 800 ug/ml by Nanodrop and 407 ug/ml by Bradford method using BSA as the standard;

Source:

Rabbit

Isotype:

IgG

Immunogen Catalog Number:

AG20462

GenBank Accession Number:

BC137267

GeneID (NCBI):

401265

UNIPROT ID:

Q9H511

Full Name:

kelch-like 31 (Drosophila)

Calculated MW:

634 aa, 70 kDa

Observed MW:

60-70 kDa

Purification Method:

Antigen affinity purification

Recommended Dilutions:

WB 1:500-1:2000

IHC 1:50-1:500

IF/ICC 1:20-1:200

## Applications

Tested Applications:

WB, IHC, IF/ICC, ELISA

Species Specificity:

human, mouse

**Note-IHC: suggested antigen retrieval with TE buffer pH 9.0; (\*) Alternatively, antigen retrieval may be performed with citrate buffer pH 6.0**

Positive Controls:

WB : mouse embryo tissue, Jurkat cells

IHC : mouse skeletal muscle tissue, human colon cancer tissue

IF/ICC : HepG2 cells,

## Background Information

KLHL31 also named as BKLHD6, KBTBD1, or Kelch like protein 31 is a 634 amino acid protein, which contains one 1 BACK domain, one BTB domain and six Kelch repeats. KLHL31 as a transcription repressor in MAPK/JNK signaling pathway to regulate cellular functions. KLHL31 is strongly expressed in skeletal muscle and weakly in heart.

## Storage

Storage:

Store at -20°C. Stable for one year after shipment.

Storage Buffer:

PBS with 0.02% sodium azide and 50% glycerol pH 7.3.

Aliquoting is unnecessary for -20°C storage

\*\*\* 20ul sizes contain 0.1% BSA

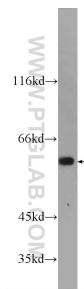
For technical support and original validation data for this product please contact:

T: 1 (888) 4PTGLAB (1-888-478-4522) (toll free in USA), or 1(312) 455-8498 (outside USA)

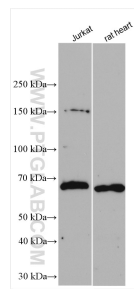
E: [proteintech@ptglab.com](mailto:proteintech@ptglab.com)  
W: [ptglab.com](http://ptglab.com)

This product is exclusively available under Proteintech Group brand and is not available to purchase from any other manufacturer.

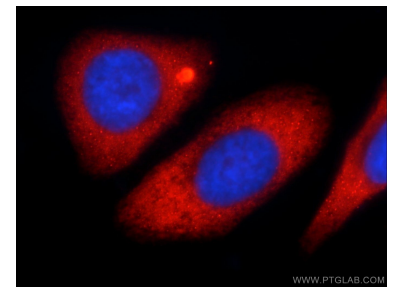
## Selected Validation Data



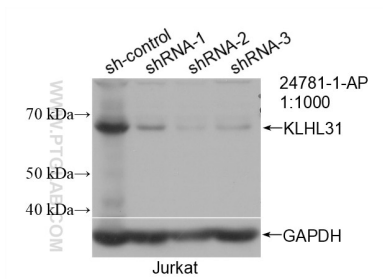
mouse embryo tissue were subjected to SDS PAGE followed by western blot with 24781-1-AP (KLHL31 Antibody) at dilution of 1:1000 incubated at room temperature for 1.5 hours.



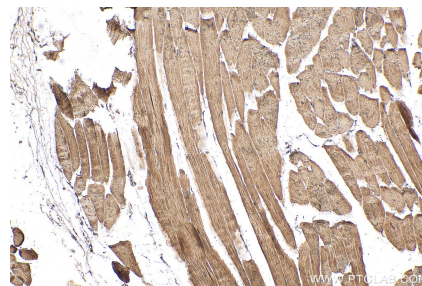
Various lysates were subjected to SDS PAGE followed by western blot with 24781-1-AP (KLHL31 antibody) at dilution of 1:2000 incubated at room temperature for 1.5 hours.



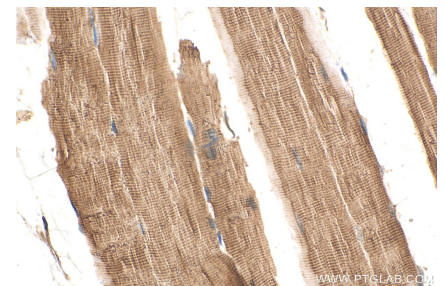
Immunofluorescent analysis of HepG2 cells using 24781-1-AP (KLHL31 antibody) at dilution of 1:50 and Rhodamine-Goat anti-Rabbit IgG.



WB result of KLHL31 antibody (24781-1-AP; 1:1000; incubated at room temperature for 1.5 hours) with sh-Control and sh-KLHL31 transfected Jurkat cells.



Immunohistochemical analysis of paraffin-embedded mouse skeletal muscle tissue slide using 24781-1-AP (KLHL31 antibody) at dilution of 1:200 (under 10x lens). Heat mediated antigen retrieval with Tris-EDTA buffer (pH 9.0).



Immunohistochemical analysis of paraffin-embedded mouse skeletal muscle tissue slide using 24781-1-AP (KLHL31 antibody) at dilution of 1:200 (under 40x lens). Heat mediated antigen retrieval with Tris-EDTA buffer (pH 9.0).