

For Research Use Only

# GIGYF2 Polyclonal antibody, PBS Only

Catalog Number: 24790-1-PBS

Featured Product



## Basic Information

Catalog Number:

24790-1-PBS

Size:

100ug, Concentration: 1 mg/ml by Nanodrop;

Source:

Rabbit

Isotype:

IgG

Immunogen Catalog Number:

AG20329

GenBank Accession Number:

BC146775

GeneID (NCBI):

26058

UNIPROT ID:

Q6Y7W6

Full Name:

GRB10 interacting GYF protein 2

Calculated MW:

1320 aa, 152 kDa

Observed MW:

150-170 kDa

Purification Method:

Antigen affinity purification

## Applications

Tested Applications:

WB, IHC, IF/ICC, IP, Indirect ELISA

Species Specificity:

human, mouse

## Background Information

GIGYF2 (GRB10 interacting GYF protein 2) was initially identified through its interaction with GRB10, an adapter protein that binds activated INS-like growth factor (IGF-I) and INS receptors (PMID: 12771153; 19744960). It may act cooperatively with GRB10 to regulate tyrosine kinase receptor signaling. The gene of GIGYF2 has been proposed as the Parkinson-disease (PD) gene underlying the PARK11 locus (PMID: 18358451).

## Storage

Storage:

Store at -80°C.

Storage Buffer:

PBS only, pH7.3

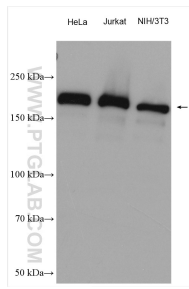
For technical support and original validation data for this product please contact:

T: 1 (888) 4PTGLAB (1-888-478-4522) (toll free in USA), or 1(312) 455-8498 (outside USA)

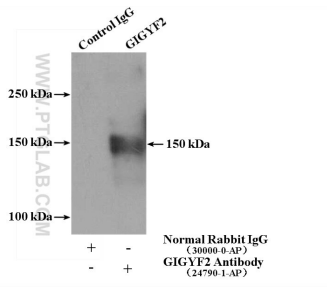
E: [proteintech@ptglab.com](mailto:proteintech@ptglab.com)  
W: [ptglab.com](http://ptglab.com)

This product is exclusively available under Proteintech Group brand and is not available to purchase from any other manufacturer.

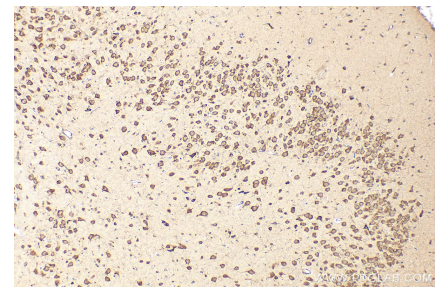
## Selected Validation Data



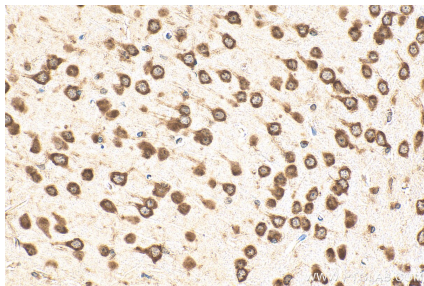
Various lysates were subjected to SDS PAGE followed by western blot with 24790-1-AP (GIGYF2 antibody) at dilution of 1:5000 incubated at room temperature for 1.5 hours. This data was developed using the same antibody clone with 24790-1-PBS in a different storage buffer formulation.



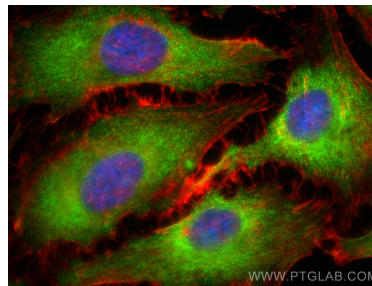
IP result of anti-GIGYF2 (IP:24790-1-AP, 4ug; Detection:24790-1-AP 1:2000) with Jurkat cells lysate 2000ug. This data was developed using the same antibody clone with 24790-1-PBS in a different storage buffer formulation.



Immunohistochemical analysis of paraffin-embedded rat brain tissue slide using 24790-1-AP (GIGYF2 antibody) at dilution of 1:200 (under 10x lens). Heat mediated antigen retrieval with Tris-EDTA buffer (pH 9.0). This data was developed using the same antibody clone with 24790-1-PBS in a different storage buffer formulation.



Immunohistochemical analysis of paraffin-embedded mouse brain tissue slide using 24790-1-AP (GIGYF2 antibody) at dilution of 1:200 (under 40x lens). Heat mediated antigen retrieval with Tris-EDTA buffer (pH 9.0). This data was developed using the same antibody clone with 24790-1-PBS in a different storage buffer formulation.



Immunofluorescent analysis of (-20°C Ethanol) fixed HeLa cells using GIGYF2 antibody (24790-1-AP) at dilution of 1:200 and CoraLite® 488-Conjugated AffiniPure Goat Anti-Rabbit IgG(H+L) (SA00013-2), CL594-phalloidin (red). This data was developed using the same antibody clone with 24790-1-PBS in a different storage buffer formulation.