

For Research Use Only

FAM92A1 Polyclonal antibody

Catalog Number: 24803-1-AP

Featured Product

6 Publications



Basic Information

Catalog Number:

24803-1-AP

Size:

150ul, Concentration: 700 ug/ml by Nanodrop and 300 ug/ml by Bradford method using BSA as the standard;

Source:

Rabbit

Isotype:

IgG

Immunogen Catalog Number:

AG20738

GenBank Accession Number:

BC014598

GeneID (NCBI):

137392

UNIPROT ID:

A1XB55

Full Name:

family with sequence similarity 92, member A1

Calculated MW:

289 aa, 33 kDa

Observed MW:

29-33 kDa

Purification Method:

Antigen affinity purification

Recommended Dilutions:

WB 1:500-1:1000

IP 0.5-4.0 ug for 1.0-3.0 mg of total protein lysate

IHC 1:20-1:200

IF/ICC 1:200-1:800

Applications

Tested Applications:

WB, IHC, IF/ICC, IP, ELISA

Cited Applications:

WB, IF

Species Specificity:

human

Cited Species:

human, mouse

Note-IHC: suggested antigen retrieval with TE buffer pH 9.0; (*) Alternatively, antigen retrieval may be performed with citrate buffer pH 6.0

Positive Controls:

WB: HeLa cells,

IP: HeLa cells,

IHC: human renal cell carcinoma tissue,

IF/ICC: HeLa cells,

Notable Publications

Author	Pubmed ID	Journal	Application
Asier Iturrate	36084634	Am J Hum Genet	WB
Xing Rong Guo	31492191	J Exp Clin Cancer Res	IF
Feng-Qian Li	27528616	Mol Cell Biol	WB,IF

Storage

Storage:

Store at -20°C. Stable for one year after shipment.

Storage Buffer:

PBS with 0.02% sodium azide and 50% glycerol pH 7.3.

Aliquoting is unnecessary for -20°C storage

*** 20ul sizes contain 0.1% BSA

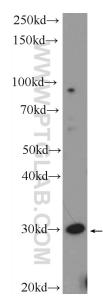
For technical support and original validation data for this product please contact:

T: 1 (888) 4PTGLAB (1-888-478-4522) (toll free in USA), or 1(312) 455-8498 (outside USA)

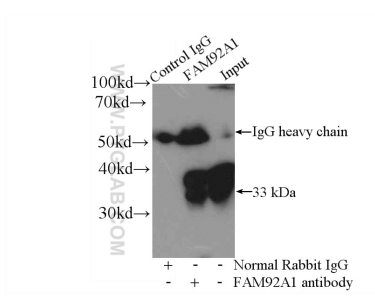
E: proteintech@ptglab.com
W: ptglab.com

This product is exclusively available under Proteintech Group brand and is not available to purchase from any other manufacturer.

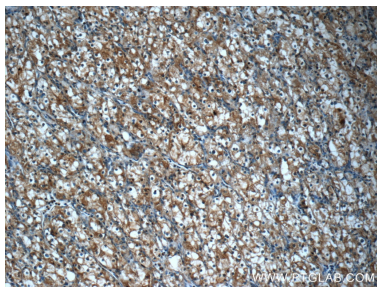
Selected Validation Data



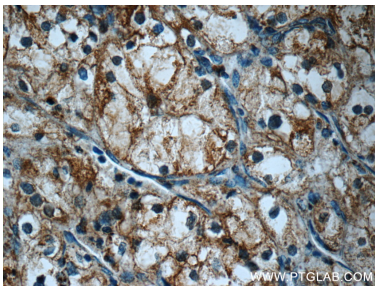
HeLa cells were subjected to SDS PAGE followed by western blot with 24803-1-AP (FAM92A1 Antibody) at dilution of 1:600 incubated at room temperature for 1.5 hours.



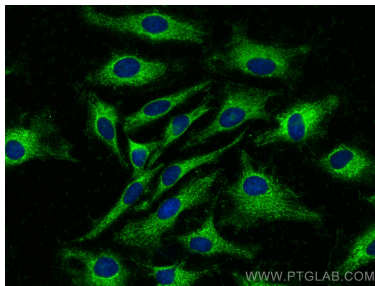
IP result of anti-FAM92A1 (IP:24803-1-AP, 4ug; Detection:24803-1-AP 1:500) with HeLa cells lysate 4000ug.



Immunohistochemical analysis of paraffin-embedded human renal cell carcinoma tissue slide using 24803-1-AP (FAM92A1 Antibody) at dilution of 1:50 (under 10x lens).



Immunohistochemical analysis of paraffin-embedded human renal cell carcinoma tissue slide using 24803-1-AP (FAM92A1 Antibody) at dilution of 1:50 (under 40x lens).



Immunofluorescent analysis of (-20°C Methanol) fixed HeLa cells using FAM92A1 antibody (24803-1-AP) at dilution of 1:400 and CoraLite®488-Conjugated Goat Anti-Rabbit IgG(H+L).