

For Research Use Only

STEAP2 Polyclonal antibody, PBS Only

Catalog Number: 24804-1-PBS



Basic Information

Catalog Number:

24804-1-PBS

Size:

100ug, Concentration: 1 mg/ml by Nanodrop;

Source:

Rabbit

Isotype:

IgG

Immunogen Catalog Number:

AG20293

GenBank Accession Number:

BC148824

GeneID (NCBI):

261729

UNIPROT ID:

Q8NFT2

Full Name:

six transmembrane epithelial antigen of the prostate 2

Calculated MW:

490 aa, 56 kDa

Observed MW:

56 kDa

Purification Method:

Antigen affinity purification

Applications

Tested Applications:

WB, IHC, Indirect ELISA

Species Specificity:

human

Background Information

STEAP2, also named as PCANAP1 and STAMP1, belongs to the STEAP family. It is a metalloreductase that has the ability to reduce both Fe³⁺ to Fe²⁺ and Cu²⁺ to Cu¹⁺. STEAP2 uses NAD⁺ as acceptor.

Storage

Storage:

Store at -80°C.

Storage Buffer:

PBS Only

For technical support and original validation data for this product please contact:

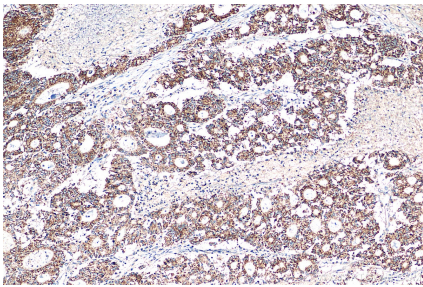
T: 1 (888) 4PTGLAB (1-888-478-4522) (toll free in USA), or 1(312) 455-8498 (outside USA)

E: proteintech@ptglab.com

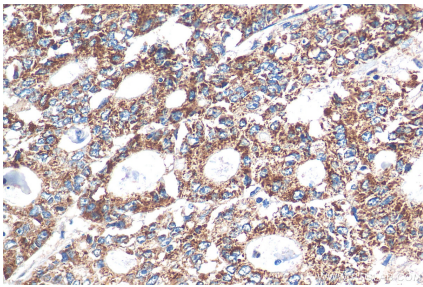
W: ptglab.com

This product is exclusively available under Proteintech Group brand and is not available to purchase from any other manufacturer.

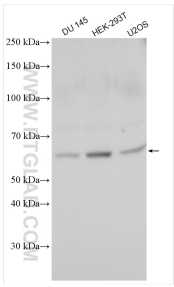
Selected Validation Data



Immunohistochemical analysis of paraffin-embedded human colon cancer tissue slide using 24804-1-AP (STEAP2 antibody) at dilution of 1:200 (under 10x lens). Heat mediated antigen retrieval with Tris-EDTA buffer (pH 9.0). This data was developed using the same antibody clone with 24804-1-PBS in a different storage buffer formulation.



Immunohistochemical analysis of paraffin-embedded human colon cancer tissue slide using 24804-1-AP (STEAP2 antibody) at dilution of 1:200 (under 40x lens). Heat mediated antigen retrieval with Tris-EDTA buffer (pH 9.0). This data was developed using the same antibody clone with 24804-1-PBS in a different storage buffer formulation.



Various lysates were subjected to SDS PAGE followed by western blot with 24804-1-AP (STEAP2 antibody) at dilution of 1:2000 incubated at room temperature for 1.5 hours. This data was developed using the same antibody clone with 24804-1-PBS in a different storage buffer formulation.