

For Research Use Only

# DMGDH Polyclonal antibody

Catalog Number: 24813-1-AP

3 Publications



## Basic Information

### Catalog Number:

24813-1-AP

### Size:

150ul, Concentration: 600 ug/ml by Nanodrop and 340 ug/ml by Bradford method using BSA as the standard;

### Source:

Rabbit

### Isotype:

IgG

### Immunogen Catalog Number:

AG20529

### GenBank Accession Number:

BC022388

### GeneID (NCBI):

29958

### UNIPROT ID:

Q9UI17

### Full Name:

dimethylglycine dehydrogenase

### Calculated MW:

866 aa, 97 kDa

### Observed MW:

97 kDa

### Purification Method:

Antigen affinity purification

### Recommended Dilutions:

WB 1:2000-1:12000

IHC 1:20-1:200

IF/ICC 1:50-1:500

## Applications

### Tested Applications:

WB, IHC, IF/ICC, FC (Intra), ELISA

### Cited Applications:

WB, IHC, IF

### Species Specificity:

human, mouse, rat

### Cited Species:

human, mouse

**Note-IHC: suggested antigen retrieval with TE buffer pH 9.0; (\*) Alternatively, antigen retrieval may be performed with citrate buffer pH 6.0**

### Positive Controls:

**WB**: mouse kidney tissue, mouse liver tissue, rat liver tissue, rat kidney tissue

**IHC**: human liver cancer tissue,

**IF/ICC**: HepG2 cells,

## Background Information

DMGDH(Dimethylglycine dehydrogenase, mitochondrial) is also named as ME2GLYDH and belongs to the GcvT family. It catalyzes the oxidative demethylation of dimethylglycine to form sarcosine and it plays a role in choline catabolism in the liver. The full length protein has a transit peptide.

## Notable Publications

Author	Pubmed ID	Journal	Application
Yin Cao	30901224	J Proteome Res	WB
I-Ling Lu	29950674	Nat Commun	IF
Gang Liu	27119355	Oncotarget	WB,IHC

## Storage

### Storage:

Store at -20°C. Stable for one year after shipment.

### Storage Buffer:

PBS with 0.02% sodium azide and 50% glycerol pH 7.3.

Aliquoting is unnecessary for -20°C storage

\*\*\* 20ul sizes contain 0.1% BSA

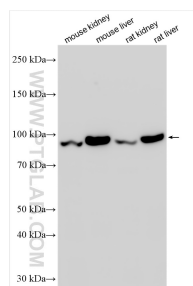
For technical support and original validation data for this product please contact:

T: 1 (888) 4PTGLAB (1-888-478-4522) (toll free in USA), or 1(312) 455-8498 (outside USA)

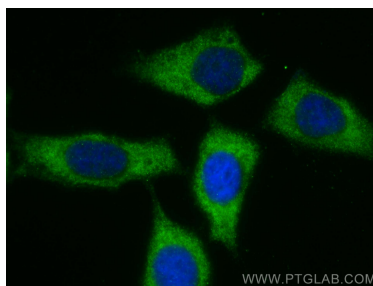
E: [proteintech@ptglab.com](mailto:proteintech@ptglab.com)  
W: [ptglab.com](http://ptglab.com)

This product is exclusively available under Proteintech Group brand and is not available to purchase from any other manufacturer.

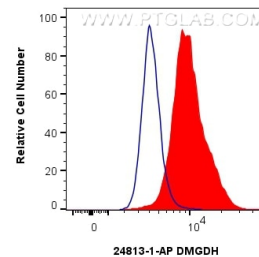
## Selected Validation Data



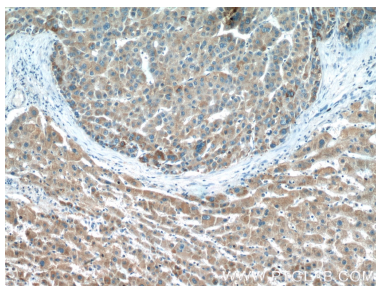
Various lysates were subjected to SDS PAGE followed by western blot with 24813-1-AP (DMGDH antibody) at dilution of 1:6000 incubated at room temperature for 1.5 hours.



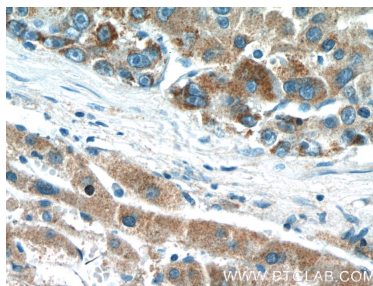
Immunofluorescent analysis of (-20°C Methanol) fixed HepG2 cells using DMGDH antibody (24813-1-AP) at dilution of 1:200 and CoraLite®488-Conjugated AffiniPure Goat Anti-Rabbit IgG(H+L).



1x10<sup>6</sup> HepG2 cells were intracellularly stained with 0.4 ug DMGDH Polyclonal antibody (24813-1-AP) and CoraLite®488-Conjugated Goat Anti-Rabbit IgG(H+L) (SA00013-2)(red), or 0.4 ug Rabbit IgG control Rabbit PolyAb (30000-0-AP) (blue). Cells were fixed with 4% PFA and permeabilized with Flow Cytometry Perm Buffer (PF00011-C).



Immunohistochemical analysis of paraffin-embedded human liver cancer tissue slide using 24813-1-AP (DMGDH Antibody) at dilution of 1:200 (under 10x lens).



Immunohistochemical analysis of paraffin-embedded human liver cancer tissue slide using 24813-1-AP (DMGDH Antibody) at dilution of 1:200 (under 40x lens).