

For Research Use Only

DMGDH Polyclonal antibody, PBS Only

Catalog Number: 24813-1-PBS



Basic Information

Catalog Number:

24813-1-PBS

Size:

100ug , Concentration: 1 mg/ml by Nanodrop;

Source:

Rabbit

Isotype:

IgG

Immunogen Catalog Number:

AG20529

GenBank Accession Number:

BC022388

GeneID (NCBI):

29958

UNIPROT ID:

Q9UI17

Full Name:

dimethylglycine dehydrogenase

Calculated MW:

866 aa, 97 kDa

Observed MW:

97 kDa

Purification Method:

Antigen affinity purification

Applications

Tested Applications:

WB, IHC, IF/ICC, FC (Intra), Indirect ELISA

Species Specificity:

human, mouse, rat

Background Information

DMGDH(Dimethylglycine dehydrogenase, mitochondrial) is also named as ME2GLYDH and belongs to the GcvT family. It catalyzes the oxidative demethylation of dimethylglycine to form sarcosine and it plays a role in choline catabolism in the liver. The full length protein has a transit peptide.

Storage

Storage:

Store at -80°C.

Storage Buffer:

PBS Only

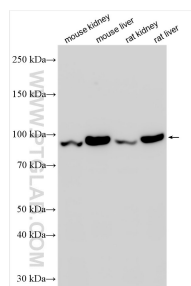
For technical support and original validation data for this product please contact:

T: 1 (888) 4PTGLAB (1-888-478-4522) (toll free in USA), or 1(312) 455-8498 (outside USA)

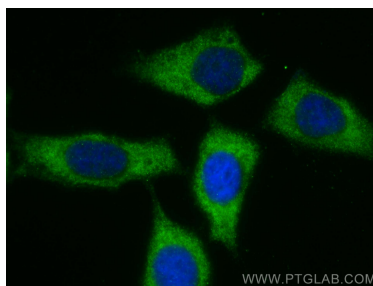
E: proteintech@ptglab.com
W: ptglab.com

This product is exclusively available under Proteintech Group brand and is not available to purchase from any other manufacturer.

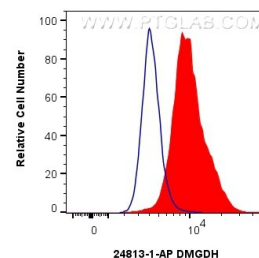
Selected Validation Data



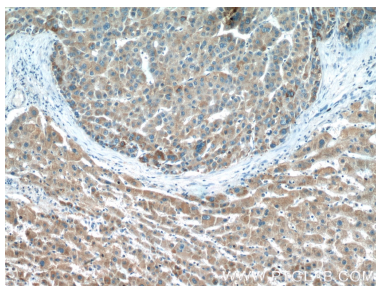
Various lysates were subjected to SDS PAGE followed by western blot with 24813-1-AP (DMGDH antibody) at dilution of 1:6000 incubated at room temperature for 1.5 hours. This data was developed using the same antibody clone with 24813-1-PBS in a different storage buffer formulation.



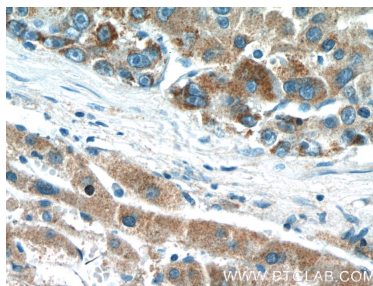
Immunofluorescent analysis of (-20°C Methanol) fixed HepG2 cells using DMGDH antibody (24813-1-AP) at dilution of 1:200 and CoraLite®488-Conjugated AffiniPure Goat Anti-Rabbit IgG(H+L). This data was developed using the same antibody clone with 24813-1-PBS in a different storage buffer formulation.



1x10⁶ HepG2 cells were intracellularly stained with 0.4 ug DMGDH Polyclonal antibody (24813-1-AP) and CoraLite®488-Conjugated Goat Anti-Rabbit IgG(H+L) (SA00013-2)(red), or 0.4 ug Rabbit IgG control Rabbit PolyAb (30000-0-AP) (blue). Cells were fixed with 4% PFA and permeabilized with Flow Cytometry Perm Buffer (PF00011-C). This data was developed using the same antibody clone with 24813-1-PBS in a different storage buffer formulation.



Immunohistochemical analysis of paraffin-embedded human liver cancer tissue slide using 24813-1-AP (DMGDH Antibody) at dilution of 1:200 (under 10x lens). This data was developed using the same antibody clone with 24813-1-PBS in a different storage buffer formulation.



Immunohistochemical analysis of paraffin-embedded human liver cancer tissue slide using 24813-1-AP (DMGDH Antibody) at dilution of 1:200 (under 40x lens). This data was developed using the same antibody clone with 24813-1-PBS in a different storage buffer formulation.