

For Research Use Only

# C1RL Polyclonal antibody

Catalog Number: 24820-1-AP



## Basic Information

<b>Catalog Number:</b> 24820-1-AP	<b>GenBank Accession Number:</b> BC156780	<b>Purification Method:</b> Antigen affinity purification
<b>Size:</b> 150ul , Concentration: 600 ug/ml by Nanodrop;	<b>GeneID (NCBI):</b> 51279	<b>Recommended Dilutions:</b> WB 1:500-1:3000 IF/ICC 1:200-1:800
<b>Source:</b> Rabbit	<b>UNIPROT ID:</b> Q9NZP8	
<b>Isotype:</b> IgG	<b>Full Name:</b> complement component 1, r subcomponent-like	
<b>Immunogen Catalog Number:</b> AG20324	<b>Calculated MW:</b> 487 aa, 53 kDa	
	<b>Observed MW:</b> 70 kDa	

## Applications

<b>Tested Applications:</b> WB, IF/ICC, ELISA	<b>Positive Controls:</b>
<b>Species Specificity:</b> human, mouse	<b>WB :</b> human plasma, <b>IF/ICC :</b> U2OS cells,

## Background Information

C1r-like serine protease analog protein (CLSPA), also named as C1RL contains a CUB domain and a serine protease domain, possessing characteristic catalytic triad. C1RL is upregulated in glioblastoma (GBM) and has been proved to be a prognostic marker in hepatocellular carcinoma and renal cell cancer (PMID: 32993564). C1RL has a calculated molecular weight of 53 kDa, and this antibody can detect a band at 70 kDa due to possible N-glycosylation (PMID: 15358180).

## Storage

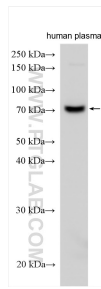
**Storage:**  
Store at -20°C. Stable for one year after shipment.  
**Storage Buffer:**  
PBS with 0.02% sodium azide and 50% glycerol pH 7.3.  
**Aliquoting is unnecessary for -20°C storage**

\*\*\* 20ul sizes contain 0.1% BSA

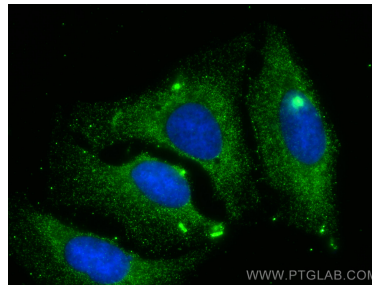
For technical support and original validation data for this product please contact:  
T: 1 (888) 4PTGLAB (1-888-478-4522) (toll free in USA), or 1(312) 455-8498 (outside USA)  
E: [proteintech@ptglab.com](mailto:proteintech@ptglab.com)  
W: [ptglab.com](http://ptglab.com)

This product is exclusively available under Proteintech Group brand and is not available to purchase from any other manufacturer.

## Selected Validation Data



Various lysates were subjected to SDS PAGE followed by western blot with 24820-1-AP (C1RL antibody) at dilution of 1:1500 incubated at room temperature for 1.5 hours.



Immunofluorescent analysis of (-20°C Methanol) fixed U2OS cells using C1RL antibody (24820-1-AP) at dilution of 1:400 and CoraLite® 488-Conjugated Goat Anti-Rabbit IgG(H+L).