

For Research Use Only

# GLDC Polyclonal antibody

Catalog Number: 24827-1-AP

Featured Product

3 Publications



## Basic Information

<b>Catalog Number:</b> 24827-1-AP	<b>GenBank Accession Number:</b> BC111995	<b>Purification Method:</b> Antigen affinity purification
<b>Size:</b> 150ul, Concentration: 600 µg/ml by Nanodrop and 333 µg/ml by Bradford method using BSA as the standard;	<b>GeneID (NCBI):</b> 2731	<b>Recommended Dilutions:</b> WB 1:500-1:2000 IP 0.5-4.0 ug for IP and 1:500-1:2000 for WB
<b>Source:</b> Rabbit	<b>Full Name:</b> glycine dehydrogenase (decarboxylating)	<b>IHC 1:100-1:400</b>
<b>Isotype:</b> IgG	<b>Calculated MW:</b> 1020 aa, 113 kDa	
<b>Immunogen Catalog Number:</b> AG20410	<b>Observed MW:</b> 113 kDa	

## Applications

<b>Tested Applications:</b> IHC, IP, WB, ELISA	<b>Positive Controls:</b>
<b>Cited Applications:</b> WB	<b>WB:</b> mouse liver tissue,
<b>Species Specificity:</b> human, mouse	<b>IP:</b> mouse liver tissue,
<b>Cited Species:</b> human, mouse	<b>IHC:</b> human liver cancer tissue,

**Note-IHC: suggested antigen retrieval with TE buffer pH 9.0; (\*) Alternatively, antigen retrieval may be performed with citrate buffer pH 6.0**

## Background Information

GLDC (Glycine dehydrogenase [decarboxylating], mitochondrial) is also named as GCSP and belongs to the GcvP family. It induces dramatic changes in glycolysis and glycine/serine metabolism that leads to changes in pyrimidine metabolism to regulate cancer cell proliferation (PMID:22225612).

## Notable Publications

Author	Pubmed ID	Journal	Application
Shengya Tian	31562192	Life Sci Alliance	WB
Teresa W M Fan	31337706	J Biol Chem	WB
Jiliang Xia	35817773	Nat Commun	WB

## Storage

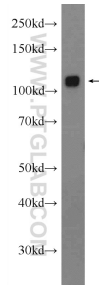
**Storage:**  
Store at -20°C. Stable for one year after shipment.  
**Storage Buffer:**  
PBS with 0.02% sodium azide and 50% glycerol pH 7.3.  
Aliquoting is unnecessary for -20°C storage

\*\*\* 20ul sizes contain 0.1% BSA

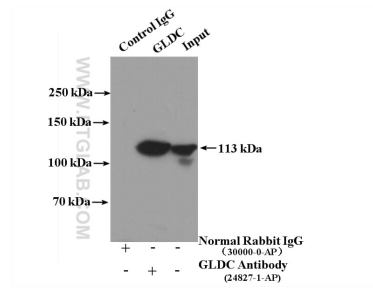
For technical support and original validation data for this product please contact:  
T: 1 (888) 4PTGLAB (1-888-478-4522) (toll free in USA), or 1(312) 455-8498 (outside USA)  
E: proteintech@ptglab.com  
W: ptglab.com

This product is exclusively available under Proteintech Group brand and is not available to purchase from any other manufacturer.

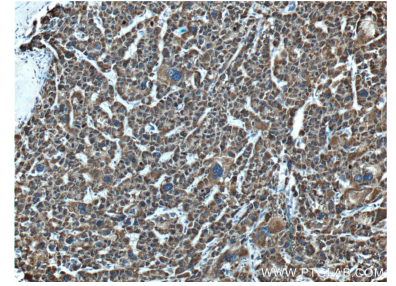
## Selected Validation Data



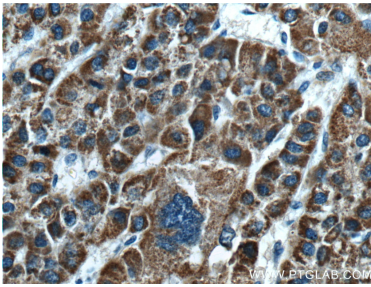
mouse liver tissue were subjected to SDS PAGE followed by western blot with 24827-1-AP (GLDC Antibody) at dilution of 1:1000 incubated at room temperature for 1.5 hours.



IP Result of anti-GLDC (IP:24827-1-AP, 4µg; Detection:24827-1-AP 1:1000) with mouse liver tissue lysate 4000µg.



Immunohistochemical analysis of paraffin-embedded human liver cancer tissue slide using 24827-1-AP (GLDC Antibody) at dilution of 1:200 (under 10x lens).



Immunohistochemical analysis of paraffin-embedded human liver cancer tissue slide using 24827-1-AP (GLDC Antibody) at dilution of 1:200 (under 40x lens).