

For Research Use Only

# SETD7 Polyclonal antibody

Catalog Number: 24840-1-AP

Featured Product

10 Publications



## Basic Information

Catalog Number:

24840-1-AP

Size:

150ul, Concentration: 500 ug/ml by Nanodrop;

Source:

Rabbit

Isotype:

IgG

Immunogen Catalog Number:

AG18219

GenBank Accession Number:

BC121055

GeneID (NCBI):

80854

UNIPROT ID:

Q8WTS6

Full Name:

SET domain containing (lysine methyltransferase) 7

Calculated MW:

366 aa, 41 kDa

Observed MW:

48-50 kDa

Purification Method:

Antigen affinity purification

Recommended Dilutions:

WB 1:1000-1:5000

IF/ICC 1:20-1:200

## Applications

Tested Applications:

WB, IF/ICC, ELISA

Cited Applications:

WB, IHC, CoIP

Species Specificity:

human, mouse, rat

Cited Species:

human, mouse

Positive Controls:

WB : HeLa cells, C6 cells, mouse brain tissue, mouse kidney tissue, NIH/3T3 cells, rat brain tissue

IF/ICC : HeLa cells,

## Background Information

SET domain containing lysine methyltransferase 7 (SETD7, also called SET7/9) was the first lysine methyltransferase (KMT) discovered to specifically monomethylate lysine-4 of histone 3 (H3K4me1) (PMID: 26435321). SETD7 has been shown to have a very broad target specificity in vitro, including transcriptional regulators such as TAF10, p53, ER, p65, STAT3, Rb, Mypt, Tat, and Foxo3 (PMID: 25136132, 30013796).

## Notable Publications

Author	Pubmed ID	Journal	Application
Baojun Duan	30361067	EBioMedicine	IHC, WB
Run Huang	29212211	Oncotarget	WB
Jia Xiaoshi	33617050	FASEB J	CoIP

## Storage

Storage:

Store at -20°C. Stable for one year after shipment.

Storage Buffer:

PBS with 0.02% sodium azide and 50% glycerol pH 7.3.

Aliquoting is unnecessary for -20°C storage

\*\*\* 20ul sizes contain 0.1% BSA

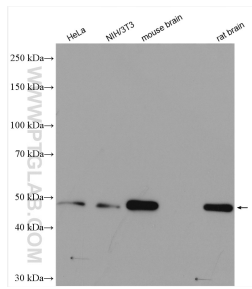
For technical support and original validation data for this product please contact:

T: 1 (888) 4PTGLAB (1-888-478-4522) (toll free in USA), or 1(312) 455-8498 (outside USA)

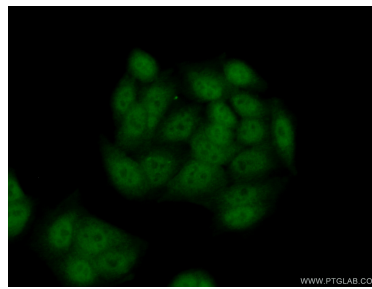
E: [proteintech@ptglab.com](mailto:proteintech@ptglab.com)  
W: [ptglab.com](http://ptglab.com)

This product is exclusively available under Proteintech Group brand and is not available to purchase from any other manufacturer.

## Selected Validation Data



Various lysates were subjected to SDS PAGE followed by western blot with 24840-1-AP (SETD7 antibody) at dilution of 1:3000 incubated at room temperature for 1.5 hours.



Immunofluorescent analysis of (10% Formaldehyde) fixed HeLa cells using 24840-1-AP (SETD7 antibody) at dilution of 1:50 and Alexa Fluor 488-conjugated Goat Anti-Rabbit IgG(H+L).