

For Research Use Only

KIF1A Polyclonal antibody

Catalog Number: 24841-1-AP



Basic Information

Catalog Number:

24841-1-AP

Size:

150ul , Concentration: 300 µg/ml by Nanodrop;

Source:

Rabbit

Isotype:

IgG

Immunogen Catalog Number:

AG18817

GenBank Accession Number:

BC111799

GeneID (NCBI):

547

UNIPROT ID:

Q12756

Full Name:

kinesin family member 1A

Calculated MW:

1690 aa, 191 kDa

Observed MW:

191-203 kDa

Purification Method:

Antigen affinity purification

Recommended Dilutions:

WB 1:500-1:1000

IF 1:200-1:800

Applications

Tested Applications:

IF, WB, ELISA

Species Specificity:

human, mouse

Positive Controls:

WB : SH-SY5Y cells,

IF : SH-SY5Y cells,

Storage

Storage:

Store at -20°C. Stable for one year after shipment.

Storage Buffer:

PBS with 0.02% sodium azide and 50% glycerol pH 7.3.

Aliquoting is unnecessary for -20°C storage

***** 20ul sizes contain 0.1% BSA**

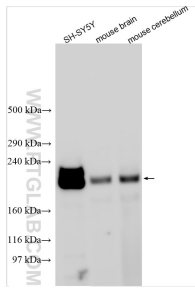
For technical support and original validation data for this product please contact:

T: 1 (888) 4PTGLAB (1-888-478-4522) (toll free in USA), or 1(312) 455-8498 (outside USA)

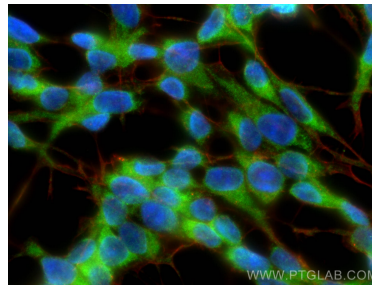
E: proteintech@ptglab.com
W: ptglab.com

This product is exclusively available under Proteintech Group brand and is not available to purchase from any other manufacturer.

Selected Validation Data



Various lysates were subjected to SDS PAGE followed by western blot with 24841-1-AP (KIF1A antibody) at dilution of 1:500 incubated at room temperature for 1.5 hours.



Immunofluorescent analysis of (-20°C Ethanol) fixed SH-SY5Y cells using KIF1A antibody (24841-1-AP) at dilution of 1:400 and CoraLite® 488-Conjugated AffiniPure Goat Anti-Rabbit IgG(H+L), CL594-Phalloidin (red).