

For Research Use Only

FIGLA Polyclonal antibody

Catalog Number: 24845-1-AP



Basic Information

Catalog Number:

24845-1-AP

Size:

150ul, Concentration: 800 ug/ml by Nanodrop;

Source:

Rabbit

Isotype:

IgG

Immunogen Catalog Number:

AG20392

GenBank Accession Number:

BC148798

GeneID (NCBI):

344018

UNIPROT ID:

Q6QHK4

Full Name:

folliculogenesis specific basic helix-loop-helix

Calculated MW:

219 aa, 24 kDa

Observed MW:

20 kDa

Purification Method:

Antigen affinity purification

Recommended Dilutions:

WB 1:1000-1:6000

Applications

Tested Applications:

WB, ELISA

Species Specificity:

human, mouse, rat

Positive Controls:

WB : mouse skin tissue, rat skin tissue

Background Information

Folliculogenesis specific bHLH transcription factor (FIGLA) also known as POF6, is an oocyte-specific transcription factor expressed mainly in ovarian follicles and involved in regulating follicle formation and oocyte development. It regulates the expression of oocyte zona pellucida genes (such as Zp1, Zp2 and Zp3) by binding to the promoter regions of these genes (PMID: 15044608). Mutations in this gene cause premature ovarian failure type 6 (PMID: 18499083).

Storage

Storage:

Store at -20°C. Stable for one year after shipment.

Storage Buffer:

PBS with 0.02% sodium azide and 50% glycerol pH 7.3.

Aliquoting is unnecessary for -20°C storage

*** 20ul sizes contain 0.1% BSA

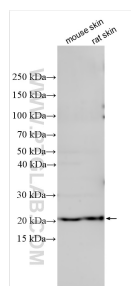
For technical support and original validation data for this product please contact:

T: 1 (888) 4PTGLAB (1-888-478-4522) (toll free in USA), or 1(312) 455-8498 (outside USA)

E: proteintech@ptglab.com
W: ptglab.com

This product is exclusively available under Proteintech Group brand and is not available to purchase from any other manufacturer.

Selected Validation Data



Various lysates were subjected to SDS PAGE followed by western blot with 24845-1-AP (FIGLA antibody) at dilution of 1:3000 incubated at room temperature for 1.5 hours.