

For Research Use Only

# KLHDC5 Polyclonal antibody

Catalog Number: 24847-1-AP

1 Publications



## Basic Information

### Catalog Number:

24847-1-AP

### Size:

150ul, Concentration: 550 ug/ml by Nanodrop and 293 ug/ml by Bradford method using BSA as the standard;

### Source:

Rabbit

### Isotype:

IgG

### Immunogen Catalog Number:

AG20448

### GenBank Accession Number:

BC137116

### GeneID (NCBI):

57542

### UNIPROT ID:

Q9P2K6

### Full Name:

kelch domain containing 5

### Calculated MW:

505 aa, 57 kDa

### Observed MW:

56 kDa

### Purification Method:

Antigen affinity purification

### Recommended Dilutions:

WB 1:500-1:2000

IHC 1:50-1:500

IF/ICC 1:20-1:200

## Applications

### Tested Applications:

WB, IHC, IF/ICC, ELISA

### Cited Applications:

WB, IHC

### Species Specificity:

human, mouse

### Cited Species:

human, mouse

**Note-IHC: suggested antigen retrieval with TE buffer pH 9.0; (\*) Alternatively, antigen retrieval may be performed with citrate buffer pH 6.0**

### Positive Controls:

WB : HeLa cells, mouse brain tissue

IHC : human kidney tissue,

IF/ICC : HeLa cells,

## Background Information

KLHDC5 also named as kelch domain containing 5 or KLHL42 is a 505 amino acid protein, which contains one BTB domain and six Kelch repeats. KLHDC5 localizes in cytoplasm and may involve in microtubule dynamics throughout mitosis.

## Notable Publications

Author	Pubmed ID	Journal	Application
Jia-Ling Ji	37596398	Acta Pharmacol Sin	WB,IHC

## Storage

### Storage:

Store at -20°C. Stable for one year after shipment.

### Storage Buffer:

PBS with 0.02% sodium azide and 50% glycerol pH 7.3.

Aliquoting is unnecessary for -20°C storage

\*\*\* 20ul sizes contain 0.1% BSA

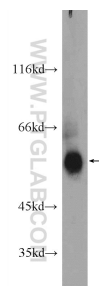
For technical support and original validation data for this product please contact:

T: 1 (888) 4PTGLAB (1-888-478-4522) (toll free in USA), or 1(312) 455-8498 (outside USA)

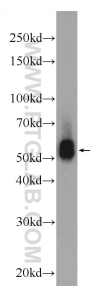
E: [proteintech@ptglab.com](mailto:proteintech@ptglab.com)  
W: [ptglab.com](http://ptglab.com)

This product is exclusively available under Proteintech Group brand and is not available to purchase from any other manufacturer.

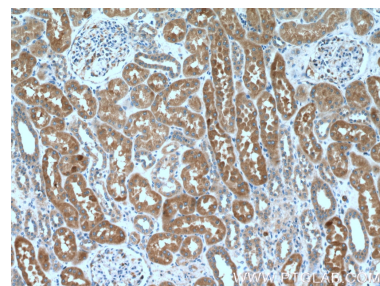
## Selected Validation Data



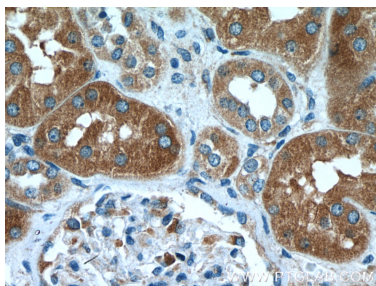
mouse brain tissue were subjected to SDS PAGE followed by western blot with 24847-1-AP (KLHDC5 Antibody) at dilution of 1:1000 incubated at room temperature for 1.5 hours.



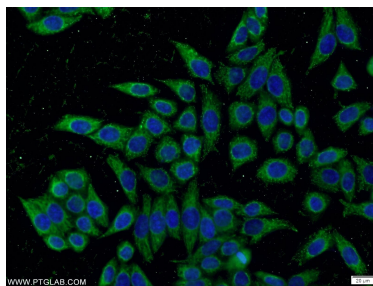
HeLa cells were subjected to SDS PAGE followed by western blot with 24847-1-AP (KLHDC5 Antibody) at dilution of 1:1000 incubated at room temperature for 1.5 hours.



Immunohistochemical analysis of paraffin-embedded human kidney tissue slide using 24847-1-AP (KLHDC5 Antibody) at dilution of 1:200 (under 10x lens).



Immunohistochemical analysis of paraffin-embedded human kidney tissue slide using 24847-1-AP (KLHDC5 Antibody) at dilution of 1:200 (under 40x lens).



Immunofluorescent analysis of HeLa cells using 24847-1-AP (KLHDC5 antibody) at dilution of 1:50 and Alexa Fluor 488-conjugated Goat Anti-Rabbit IgG(H+L).