

For Research Use Only

NRBF2 Polyclonal antibody

Catalog Number: 24858-1-AP

Featured Product

5 Publications



Basic Information

Catalog Number:

24858-1-AP

Size:

150ul, Concentration: 1500 ug/ml by Nanodrop and 740 ug/ml by Bradford method using BSA as the standard;

Source:

Rabbit

Isotype:

IgG

Immunogen Catalog Number:

AG21403

GenBank Accession Number:

BC001345

GeneID (NCBI):

29982

UNIPROT ID:

Q96F24

Full Name:

nuclear receptor binding factor 2

Calculated MW:

32 kDa

Observed MW:

35-37 kDa

Purification Method:

Antigen affinity purification

Recommended Dilutions:

WB 1:1000-1:6000

IP 0.5-4.0 ug for 1.0-3.0 mg of total protein lysate

IHC 1:50-1:500

IF/ICC 1:50-1:500

Applications

Tested Applications:

WB, IHC, IF/ICC, IP, ELISA

Cited Applications:

WB, IHC, IF, CoIP

Species Specificity:

human, mouse

Cited Species:

human, mouse

Positive Controls:

WB : HEK-293 cells, HeLa cells

IP : HEK-293 cells,

IHC : human liver tissue,

IF/ICC : HepG2 cells,

Note-IHC: suggested antigen retrieval with TE buffer pH 9.0; (*) Alternatively, antigen retrieval may be performed with citrate buffer pH 6.0

Background Information

NRBF2 also termed as Nuclear receptor-binding factor 2 or COPR is a 287 amino acid protein, which Interacts with PPARA, PPARG and PPARG. NRBF2 as transcription activator may modulate transcriptional activation by target nuclear receptors. NRBF2 is expressed in keratinocytes, liver and placenta. NRBF2, which exists as two isoforms due to alternative splicing, is localized to both the nucleus and the cytoplasm.

Notable Publications

Author	Pubmed ID	Journal	Application
Hanhai Zeng	34530854	J Neuroinflammation	IHC,IF
Weitao Shen	35712081	iScience	WB,IHC,IF,CoIP
Xiaosen Ouyang	32350405	Lab Invest	WB

Storage

Storage:

Store at -20°C. Stable for one year after shipment.

Storage Buffer:

PBS with 0.02% sodium azide and 50% glycerol pH 7.3.

Aliquoting is unnecessary for -20°C storage

*** 20ul sizes contain 0.1% BSA

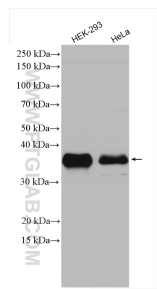
For technical support and original validation data for this product please contact:

T: 1 (888) 4PTGLAB (1-888-478-4522) (toll free in USA), or 1(312) 455-8498 (outside USA)

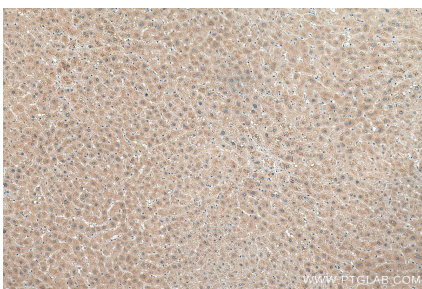
E: proteintech@ptglab.com
W: ptglab.com

This product is exclusively available under Proteintech Group brand and is not available to purchase from any other manufacturer.

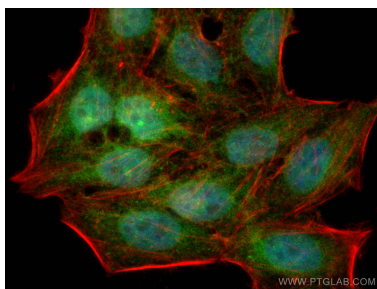
Selected Validation Data



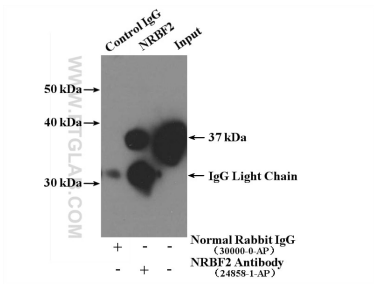
Various lysates were subjected to SDS PAGE followed by western blot with 24858-1-AP (NRBF2 antibody) at dilution of 1:3000 incubated at room temperature for 1.5 hours.



Immunohistochemical analysis of paraffin-embedded human liver tissue slide using 24858-1-AP (NRBF2 antibody) at dilution of 1:200 (under 10x lens). Heat mediated antigen retrieval with Tris-EDTA buffer (pH 9.0).



Immunofluorescent analysis of (4% PFA) fixed HepG2 cells using NRBF2 antibody (24858-1-AP) at dilution of 1:200 and CoraLite®488-Conjugated AffiniPure Goat Anti-Rabbit IgG(H+L), CL594-Phalloidin (red).



IP result of anti-NRBF2 (IP:24858-1-AP, 4ug; Detection:24858-1-AP 1:2000) with HEK-293 cells lysate 2640ug.