

For Research Use Only

# NRBF2 Polyclonal antibody, PBS Only

Catalog Number: 24858-1-PBS

Featured Product



## Basic Information

### Catalog Number:

24858-1-PBS

### Size:

100ug, Concentration: 1 mg/ml by Nanodrop;

### Source:

Rabbit

### Isotype:

IgG

### Immunogen Catalog Number:

AG21403

### GenBank Accession Number:

BC001345

### GeneID (NCBI):

29982

### UNIPROT ID:

Q96F24

### Full Name:

nuclear receptor binding factor 2

### Calculated MW:

32 kDa

### Observed MW:

35-37 kDa

### Purification Method:

Antigen affinity purification

## Applications

### Tested Applications:

WB, IHC, IF/ICC, IP, Indirect ELISA

### Species Specificity:

human, mouse

## Background Information

NRBF2 also termed as Nuclear receptor-binding factor 2 or COPR is a 287 amino acid protein, which interacts with PPARA, PPARG and PPARG. NRBF2 as transcription activator may modulate transcriptional activation by target nuclear receptors. NRBF2 is expressed in keratinocytes, liver and placenta. NRBF2, which exists as two isoforms due to alternative splicing, is localized to both the nucleus and the cytoplasm.

## Storage

### Storage:

Store at -80°C.

### Storage Buffer:

PBS Only

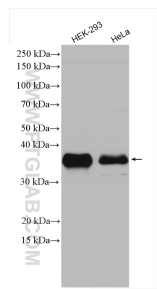
For technical support and original validation data for this product please contact:

T: 1 (888) 4PTGLAB (1-888-478-4522) (toll free in USA), or 1(312) 455-8498 (outside USA)

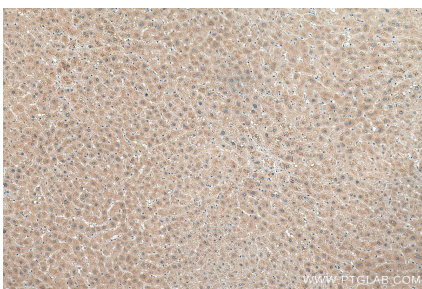
E: [proteintech@ptglab.com](mailto:proteintech@ptglab.com)  
W: [ptglab.com](http://ptglab.com)

This product is exclusively available under Proteintech Group brand and is not available to purchase from any other manufacturer.

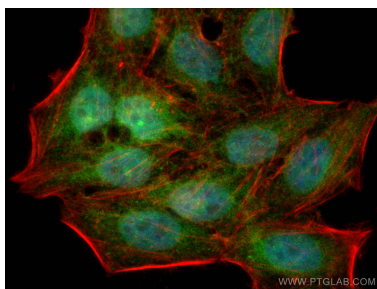
Selected Validation Data



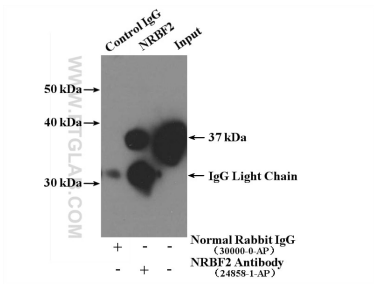
Various lysates were subjected to SDS PAGE followed by western blot with 24858-1-AP (NRBF2 antibody) at dilution of 1:3000 incubated at room temperature for 1.5 hours. This data was developed using the same antibody clone with 24858-1-PBS in a different storage buffer formulation.



Immunohistochemical analysis of paraffin-embedded human liver tissue slide using 24858-1-AP (NRBF2 antibody) at dilution of 1:200 (under 10x lens). Heat mediated antigen retrieval with Tris-EDTA buffer (pH 9.0). This data was developed using the same antibody clone with 24858-1-PBS in a different storage buffer formulation.



Immunofluorescent analysis of (4% PFA) fixed HepG2 cells using NRBF2 antibody (24858-1-AP) at dilution of 1:200 and CoraLite®488-Conjugated AffiniPure Goat Anti-Rabbit IgG(H+L), CL594-Phalloidin (red). This data was developed using the same antibody clone with 24858-1-PBS in a different storage buffer formulation.



IP result of anti-NRBF2 (IP:24858-1-AP, 4ug; Detection:24858-1-AP 1:2000) with HEK-293 cells lysate 2640ug. This data was developed using the same antibody clone with 24858-1-PBS in a different storage buffer formulation.