

For Research Use Only

LRCH2 Polyclonal antibody

Catalog Number:24866-1-AP



Basic Information

Catalog Number: 24866-1-AP	GenBank Accession Number: BC125224	Purification Method: Antigen affinity purification
Size: 150ul , Concentration: 600 ug/ml by Nanodrop and 373 ug/ml by Bradford method using BSA as the standard;	GeneID (NCBI): 57631	Recommended Dilutions: WB 1:500-1:3000 IHC 1:20-1:200
Source: Rabbit	UNIPROT ID: Q5VUJ6	
Isotype: IgG	Full Name: leucine-rich repeats and calponin homology (CH) domain containing 2	
Immunogen Catalog Number: AG21701	Calculated MW: 765 aa, 85 kDa	
	Observed MW: 84 kDa	

Applications

Tested Applications:

WB, IHC, ELISA

Species Specificity:

human, mouse

Note-IHC: suggested antigen retrieval with TE buffer pH 9.0; (*) Alternatively, antigen retrieval may be performed with citrate buffer pH 6.0

Positive Controls:

WB : mouse brain tissue, mouse heart tissue, mouse ovary tissue

IHC : human colon tissue,

Background Information

Leucine rich repeat and calponin homology domain containing protein 2 (LRCH2) also named as KIAA1495 is a 765 amino acid protein, which contains one CH domain and nine LRR repeats. The function of LRCH2 is still non-known.

Storage

Storage:

Store at -20°C. Stable for one year after shipment.

Storage Buffer:

PBS with 0.02% sodium azide and 50% glycerol pH 7.3.

Aliquoting is unnecessary for -20°C storage

*** 20ul sizes contain 0.1% BSA

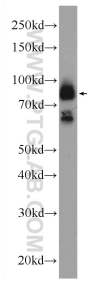
For technical support and original validation data for this product please contact:

T: 1 (888) 4PTGLAB (1-888-478-4522) (toll free in USA), or 1(312) 455-8498 (outside USA)

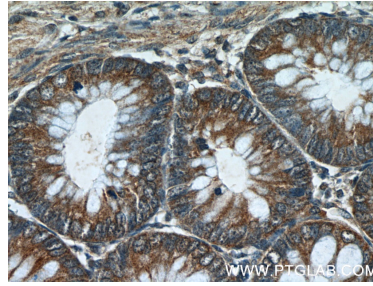
E: proteintech@ptglab.com
W: ptglab.com

This product is exclusively available under Proteintech Group brand and is not available to purchase from any other manufacturer.

Selected Validation Data



mouse brain tissue were subjected to SDS PAGE followed by western blot with 24866-1-AP (LRCH2 Antibody) at dilution of 1:1500 incubated at room temperature for 1.5 hours.



Immunohistochemical analysis of paraffin-embedded human colon tissue slide using 24866-1-AP (LRCH2 Antibody) at dilution of 1:50 (under 40x lens).