

For Research Use Only

XBP1S-specific Polyclonal antibody

Catalog Number: 24868-1-AP

Featured Product

104 Publications



Basic Information

Catalog Number:

24868-1-AP

Size:

150ul, Concentration: 700 ug/ml by Nanodrop;

Source:

Rabbit

Isotype:

IgG

Immunogen Catalog Number:

AG21703

GenBank Accession Number:

BC000938

GeneID (NCBI):

7494

UNIPROT ID:

P17861

Full Name:

X-box binding protein 1

Calculated MW:

261 aa, 29 kDa

Observed MW:

45-65 kDa

Purification Method:

Antigen affinity purification

Recommended Dilutions:

WB: 1:1000-1:6000

IHC: 1:50-1:500

FC (Intra): 0.40 ug per 10⁶ cells in a 100 µl suspension

Applications

Tested Applications:

WB, IHC, FC (Intra), ELISA

Cited Applications:

WB, IHC, IF

Species Specificity:

human, mouse, rat

Cited Species:

human, mouse, rat, bovine

Note-IHC: suggested antigen retrieval with TE buffer pH 9.0; (*) Alternatively, antigen retrieval may be performed with citrate buffer pH 6.0

Positive Controls:

WB: HEK-293T cells, MCF-7 cells, mouse liver tissue, rat liver tissue

IHC: human breast cancer tissue, human colon cancer tissue, human liver cancer tissue, mouse liver tissue

FC (Intra): HepG2 cells,

Background Information

XBP1, also named as XBP2, belongs to the bZIP family. The X-box-binding protein-1 (XBP1) is a transcriptional regulator of the ER stress response that lies downstream of inositol-requiring enzyme 1 (IRE1α) activation (PMID: 14559994). XBP1 localizes in the nucleus. As a transcription factor, it is essential for hepatocyte growth, the differentiation of plasma cells, the immunoglobulin secretion, and the unfolded protein response. XBP1 has an association with major affective disorder. The unspliced XBP1U isoform is composed of 261 amino acid residues, and the spliced XBP1S isoform is composed of 376 amino acid residues. The calculated molecular weight of protein generated from the unspliced XBP1 isoform XBP1U mRNA is 33 kDa, and protein generated from spliced XBP1 isoform XBP1S mRNA is 40 kDa, and shows at 45-65 kDa range. This antibody specially recognizes the XBP1S isoform.

Notable Publications

Author	Pubmed ID	Journal	Application
Guoqing Jing	36171629	J Neuroinflammation	WB
Jing Sun	34650437	Front Pharmacol	WB
Yu Chen	34592660	Cell Calcium	WB

Storage

Storage:

Store at -20°C. Stable for one year after shipment.

Storage Buffer:

PBS with 0.02% sodium azide and 50% glycerol, pH7.3

Aliquoting is unnecessary for -20°C storage

*** 20ul sizes contain 0.1% BSA

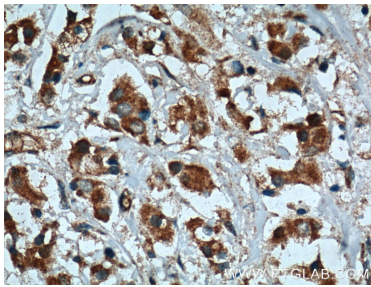
For technical support and original validation data for this product please contact:

T: 1 (888) 4PTGLAB (1-888-478-4522) (toll free in USA), or 1(312) 455-8498 (outside USA)

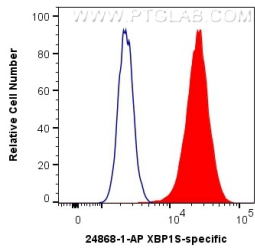
E: proteintech@ptglab.com
W: ptglab.com

This product is exclusively available under Proteintech Group brand and is not available to purchase from any other manufacturer.

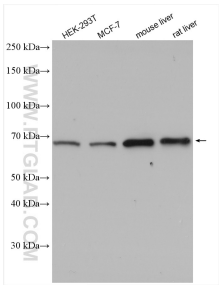
Selected Validation Data



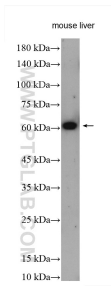
Immunohistochemical analysis of paraffin-embedded human breast cancer tissue slide using 24868-1-AP (XBP1S antibody at dilution of 1:200 (under 40x lens). Heat mediated antigen retrieval with Tris-EDTA buffer (pH 9.0).



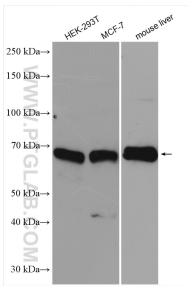
1X10⁶ HepG2 cells were intracellularly stained with 0.4 ug Anti-Human XBP1S-specific (24868-1-AP) and CoraLite® 488-Conjugated AffiniPure Goat Anti-Rabbit IgG(H+L) at dilution 1:1000 (red), or 0.4 ug Control Antibody. Cells were fixed with 90% MeOH and permeabilized with Flow Cytometry Perm Buffer (PF00011-C).



Various lysates were subjected to SDS PAGE followed by western blot with 24868-1-AP (XBP1S-specific antibody) at dilution of 1:2000 incubated at room temperature for 1.5 hours.



mouse liver tissue were subjected to SDS PAGE followed by western blot with 24868-1-AP (XBP1S-specific antibody) at dilution of 1:500 incubated at room temperature for 1.5 hours.



Various lysates were subjected to SDS PAGE followed by western blot with 24868-1-AP (XBP1S-specific antibody) at dilution of 1:3000 incubated at room temperature for 1.5 hours.