

For Research Use Only

# LALBA Polyclonal antibody

Catalog Number: 24871-1-AP



## Basic Information

<b>Catalog Number:</b> 24871-1-AP	<b>GenBank Accession Number:</b> BC112316	<b>Purification Method:</b> Antigen affinity purification
<b>Size:</b> 150ul , Concentration: 350 ug/ml by Nanodrop and 267 ug/ml by Bradford method using BSA as the standard;	<b>GeneID (NCBI):</b> 3906	<b>Recommended Dilutions:</b> WB 1:1000-1:4000
<b>Source:</b> Rabbit	<b>UNIPROT ID:</b> P00709	
<b>Isotype:</b> IgG	<b>Full Name:</b> lactalbumin, alpha-	
<b>Immunogen Catalog Number:</b> AG21630	<b>Calculated MW:</b> 142 aa, 16 kDa	
	<b>Observed MW:</b> 13-16 kDa	

## Applications

<b>Tested Applications:</b> WB, ELISA	<b>Positive Controls:</b> WB : human milk, human saliva
<b>Species Specificity:</b> human	

## Background Information

LALBA encodes alpha-lactalbumin which is secreted calcium metalloprotein, a principal protein of milk. As a monomer, LALBA strongly binds calcium and zinc ions and may possess bactericidal or antitumor activity. LALBA also could form a complex with the the beta 1,4-galactosyltransferase to produce the enzyme lactose synthase, participating in the biosynthesis of lactose. Moreover, these proteins enable lactose synthase to produce lactose by transferring galactose moieties to glucose. Studies have demonstrated that LALBA-null transgenic mice showed lacking lactose in the milk and inadequate for feeding the pups (PMID:26304038; PMID:12216958).

## Storage

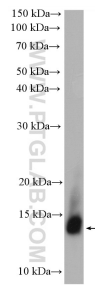
**Storage:**  
Store at -20°C. Stable for one year after shipment.  
**Storage Buffer:**  
PBS with 0.02% sodium azide and 50% glycerol pH 7.3.  
Aliquoting is unnecessary for -20°C storage

\*\*\* 20ul sizes contain 0.1% BSA

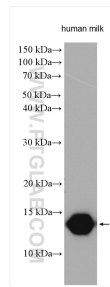
For technical support and original validation data for this product please contact:  
T: 1 (888) 4PTGLAB (1-888-478-4522) (toll free in USA), or 1(312) 455-8498 (outside USA)  
E: [proteintech@ptglab.com](mailto:proteintech@ptglab.com)  
W: [ptglab.com](http://ptglab.com)

This product is exclusively available under Proteintech Group brand and is not available to purchase from any other manufacturer.

## Selected Validation Data



human saliva were subjected to SDS PAGE followed by western blot with 24871-1-AP (LALBA antibody) at dilution of 1:600 incubated at room temperature for 1.5 hours.



human milk lysates were subjected to SDS PAGE followed by western blot with 24871-1-AP (LALBA antibody) at dilution of 1:2000 incubated at room temperature for 1.5 hours.