

For Research Use Only

# WDR81 Polyclonal antibody, PBS Only

Catalog Number: 24874-1-PBS

Featured Product



## Basic Information

**Catalog Number:**

24874-1-PBS

**Size:**

100ug, Concentration: 1 mg/ml by Nanodrop;

**Source:**

Rabbit

**Isotype:**

IgG

**Immunogen Catalog Number:**

AG21666

**GenBank Accession Number:**

BC114568

**GeneID (NCBI):**

124997

**UNIPROT ID:**

Q562E7

**Full Name:**

WD repeat domain 81

**Calculated MW:**

1941 aa, 212 kDa

**Observed MW:**

74-80 kDa, 250 kDa

**Purification Method:**

Antigen affinity purification

## Applications

**Tested Applications:**

WB, IHC, IF/ICC, IF-P, Indirect ELISA

**Species Specificity:**

human, mouse

## Background Information

WD repeat-containing protein 81 (WDR81) is a 1941 amino acid protein, which contains one BEACH domain and five WD repeats. WDR81 is widely expressed in the brain. WDR81 has an association with cerebellar ataxia, mental retardation, and dysequilibrium syndrome 2. WDR81 exists as six isoforms.

## Storage

**Storage:**

Store at -80°C.

**Storage Buffer:**

PBS Only

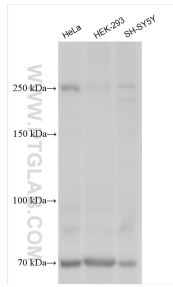
For technical support and original validation data for this product please contact:

T: 1 (888) 4PTGLAB (1-888-478-4522) (toll free in USA), or 1(312) 455-8498 (outside USA)

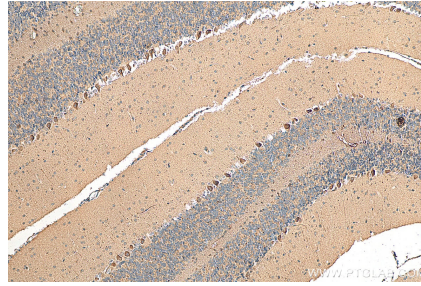
E: [proteintech@ptglab.com](mailto:proteintech@ptglab.com)  
W: [ptglab.com](http://ptglab.com)

This product is exclusively available under Proteintech Group brand and is not available to purchase from any other manufacturer.

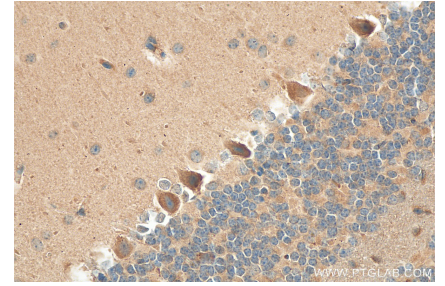
## Selected Validation Data



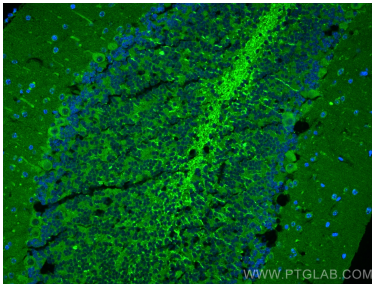
Various lysates were subjected to SDS PAGE followed by western blot with 24874-1-AP (WDR81 antibody) at dilution of 1:500 incubated at room temperature for 1.5 hours. This data was developed using the same antibody clone with 24874-1-PBS in a different storage buffer formulation.



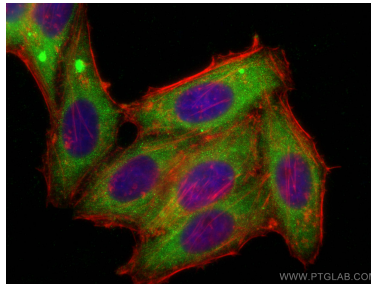
Immunohistochemical analysis of paraffin-embedded mouse cerebellum tissue slide using 24874-1-AP (WDR81 antibody) at dilution of 1:400 (under 10x lens). Heat mediated antigen retrieval with Tris-EDTA buffer (pH 9.0). This data was developed using the same antibody clone with 24874-1-PBS in a different storage buffer formulation.



Immunohistochemical analysis of paraffin-embedded mouse cerebellum tissue slide using 24874-1-AP (WDR81 antibody) at dilution of 1:400 (under 40x lens). Heat mediated antigen retrieval with Tris-EDTA buffer (pH 9.0). This data was developed using the same antibody clone with 24874-1-PBS in a different storage buffer formulation.



Immunofluorescent analysis of (4% PFA) fixed mouse cerebellum tissue using WDR81 antibody (24874-1-AP) at dilution of 1:200 and CoraLite@488-Conjugated AffiniPure Goat Anti-Rabbit IgG(H+L). This data was developed using the same antibody clone with 24874-1-PBS in a different storage buffer formulation.



Immunofluorescent analysis of (-20°C Ethanol) fixed HepG2 cells using WDR81 antibody (24874-1-AP) at dilution of 1:400 and CoraLite@488-Conjugated AffiniPure Goat Anti-Rabbit IgG(H+L) (SA00013-2), CL594-phalloidin (red). This data was developed using the same antibody clone with 24874-1-PBS in a different storage buffer formulation.