

For Research Use Only

# CYP7B1 Polyclonal antibody, PBS Only

Catalog Number: 24889-1-PBS



## Basic Information

**Catalog Number:**

24889-1-PBS

**Size:**

100ug, Concentration: 1 mg/ml by Nanodrop;

**Source:**

Rabbit

**Isotype:**

IgG

**Immunogen Catalog Number:**

AG19374

**GenBank Accession Number:**

BC136574

**GeneID (NCBI):**

9420

**UNIPROT ID:**

O75881

**Full Name:**

cytochrome P450, family 7, subfamily B, polypeptide 1

**Calculated MW:**

506 aa, 58 kDa

**Observed MW:**

50-55 kDa

**Purification Method:**

Antigen affinity purification

## Applications

**Tested Applications:**

WB, IHC, IF/ICC, Indirect ELISA

**Species Specificity:**

human, mouse

## Background Information

CYP7B1 (Cytochrome P450 7B1) is also named as 25-hydroxycholesterol 7- $\alpha$ -hydroxylase and belongs to the cytochrome P450 family. It catalyzes the first and rate-limiting step in the coconversion of cholesterol to bile acids and CYP7B1-mediated catalysis may play a role for control of the cellular levels of androgens, not only of estrogens.

## Storage

**Storage:**

Store at -80°C.

**Storage Buffer:**

PBS only, pH7.3

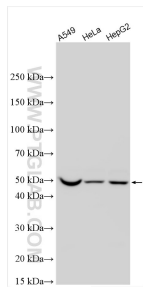
For technical support and original validation data for this product please contact:

T: 1 (888) 4PTGLAB (1-888-478-4522) (toll free in USA), or 1(312) 455-8498 (outside USA)

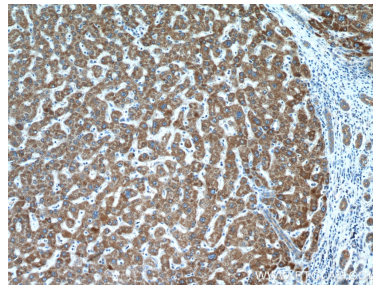
E: [proteintech@ptglab.com](mailto:proteintech@ptglab.com)  
W: [ptglab.com](http://ptglab.com)

**This product is exclusively available under Proteintech Group brand and is not available to purchase from any other manufacturer.**

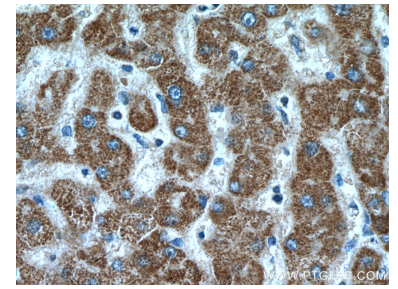
## Selected Validation Data



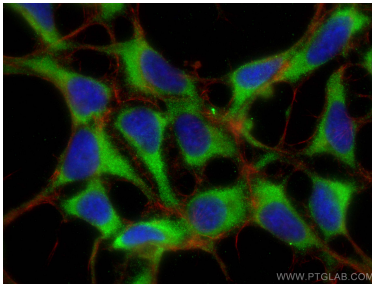
Various lysates were subjected to SDS PAGE followed by western blot with 24889-1-AP (CYP7B1 antibody) at dilution of 1:4000 incubated at room temperature for 1.5 hours. This data was developed using the same antibody clone with 24889-1-PBS in a different storage buffer formulation.



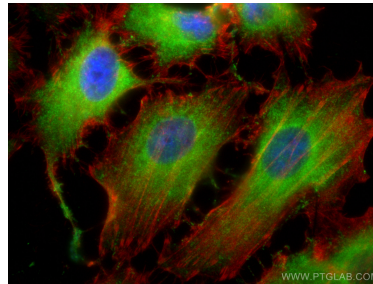
Immunohistochemical analysis of paraffin-embedded human liver cancer tissue slide using 24889-1-AP (CYP7B1 antibody) at dilution of 1:200 (under 10x lens). This data was developed using the same antibody clone with 24889-1-PBS in a different storage buffer formulation.



Immunohistochemical analysis of paraffin-embedded human liver cancer tissue slide using 24889-1-AP (CYP7B1 antibody) at dilution of 1:200 (under 40x lens). This data was developed using the same antibody clone with 24889-1-PBS in a different storage buffer formulation.



Immunofluorescent analysis of (-20°C Ethanol) fixed HEK-293 cells using CYP7B1 antibody (24889-1-AP) at dilution of 1:200 and CoraLite@488-Conjugated AffiniPure Goat Anti-Rabbit IgG(H+L), CL594-Phalloidin (red). This data was developed using the same antibody clone with 24889-1-PBS in a different storage buffer formulation.



Immunofluorescent analysis of (-20°C Ethanol) fixed HeLa cells using CYP7B1 antibody (24889-1-AP) at dilution of 1:400 and CoraLite@488-Conjugated AffiniPure Goat Anti-Rabbit IgG(H+L) (SA00013-2), CL594-phalloidin (red). This data was developed using the same antibody clone with 24889-1-PBS in a different storage buffer formulation.