

For Research Use Only

CCT2 Polyclonal antibody

Catalog Number: 24896-1-AP

Featured Product

8 Publications



Basic Information

Catalog Number:

24896-1-AP

Size:

150ul, Concentration: 700 ug/ml by Nanodrop;

Source:

Rabbit

Isotype:

IgG

Immunogen Catalog Number:

AG19264

GenBank Accession Number:

BC113516

GeneID (NCBI):

10576

UNIPROT ID:

P78371

Full Name:

chaperonin containing TCP1, subunit 2 (beta)

Calculated MW:

535 aa, 57 kDa

Observed MW:

50-58 kDa

Purification Method:

Antigen affinity purification

Recommended Dilutions:

WB 1:500-1:2000

IHC 1:50-1:500

IF/ICC 1:200-1:800

Applications

Tested Applications:

WB, IHC, IF/ICC, ELISA

Cited Applications:

WB, IF, IP

Species Specificity:

human, mouse

Cited Species:

human, mouse

Positive Controls:

WB: mouse testis tissue, NIH/3T3 cells, Jurkat cells

IHC: human stomach tissue,

IF/ICC: NIH/3T3 cells,

Note-IHC: suggested antigen retrieval with TE buffer pH 9.0; (*) Alternatively, antigen retrieval may be performed with citrate buffer pH 6.0

Background Information

CCT2 is a gene encoding a molecular chaperone that is a member of the chaperonin-containing TCP1 complex (CCT), also known as the TCP1 ring complex (TRiC). The switch of CCT2's role from a chaperonin to a specific aggregophagy receptor is achieved by CCT2 monomer formation. CCT2 functions independently of ubiquitin and the TRiC complex to facilitate the autophagic clearance of solid protein aggregates. CCT2 has 2 isoforms with a molecular mass of 53 and 57 kDa. (PMID: 35699934)

Notable Publications

Author	Pubmed ID	Journal	Application
Jiale Zhu	35513225	Pharmacol Res	WB
Yu-Cheng Zhang	33475699	J Cell Biol	WB, IF
Yi-Fu Zhu	39021082	Zool Res	WB

Storage

Storage:

Store at -20°C. Stable for one year after shipment.

Storage Buffer:

PBS with 0.02% sodium azide and 50% glycerol pH 7.3.

Aliquoting is unnecessary for -20°C storage

*** 20ul sizes contain 0.1% BSA

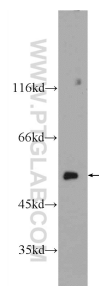
For technical support and original validation data for this product please contact:

T: 1 (888) 4PTGLAB (1-888-478-4522) (toll free in USA), or 1(312) 455-8498 (outside USA)

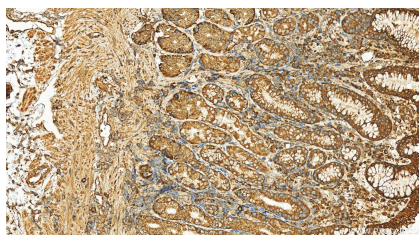
E: proteintech@ptglab.com
W: ptglab.com

This product is exclusively available under Proteintech Group brand and is not available to purchase from any other manufacturer.

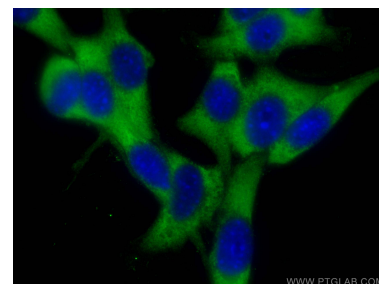
Selected Validation Data



mouse testis tissue were subjected to SDS PAGE followed by western blot with 24896-1-AP (CCT2 Antibody) at dilution of 1:1000 incubated at room temperature for 1.5 hours.



Immunohistochemical analysis of paraffin-embedded human stomach tissue slide using 24896-1-AP (CCT2 antibody) at dilution of 1:200 (under 20x lens). Heat mediated antigen retrieval with Tris-EDTA buffer (pH 9.0).



Immunofluorescent analysis of (-20°C Methanol) fixed NIH/3T3 cells using CCT2 antibody (24896-1-AP) at dilution of 1:400 and CoraLite®488-Conjugated AffiniPure Goat Anti-Rabbit IgG(H+L).