

For Research Use Only

# GEMIN5 Polyclonal antibody

Catalog Number: 24897-1-AP **2 Publications**



## Basic Information

<b>Catalog Number:</b> 24897-1-AP	<b>GenBank Accession Number:</b> BC113614	<b>Purification Method:</b> Antigen affinity purification
<b>Size:</b> 150ul , Concentration: 850 µg/ml by Nanodrop and 487 µg/ml by Bradford method using BSA as the standard;	<b>GeneID (NCBI):</b> 25929	<b>Recommended Dilutions:</b> WB 1:1000-1:6000 IP 0.5-4.0 ug for IP and 1:500-1:2000 for WB
<b>Source:</b> Rabbit	<b>Full Name:</b> gem (nuclear organelle) associated protein 5	<b>IHC 1:50-1:500</b> <b>IF 1:10-1:100</b>
<b>Isotype:</b> IgG	<b>Calculated MW:</b> 1508 aa, 169 kDa	
<b>Immunogen Catalog Number:</b> AG19268	<b>Observed MW:</b> 168 kDa	

## Applications

<b>Tested Applications:</b> IF, IHC, IP, WB, ELISA	<b>Positive Controls:</b> WB : HEK-293 cells, HeLa cells, Jurkat cells
<b>Cited Applications:</b> IF, WB	<b>IP :</b> HeLa cells,
<b>Species Specificity:</b> human, mouse	<b>IHC :</b> mouse cerebellum tissue,
<b>Cited Species:</b> human	<b>IF :</b> HeLa cells,

**Note-IHC: suggested antigen retrieval with TE buffer pH 9.0; (\*) Alternatively, antigen retrieval may be performed with citrate buffer pH 6.0**

## Background Information

GEMIN5 also named as Gem associated protein 5 is a 1508 amino-acid protein, which belongs to the WD repeat gemin-5 family. The molecular weight of GEMIN5 is 168 kDa GEMIN5 is a component of SMN complex, which plays an essential role in spliceosomal snRNP assembly in the cytoplasm and is required for pre-mRNA splicing in the nucleus. GEMIN5 is identified as the factor that allows the SMN complex to distinguish snRNAs from other cellular RNAs for snRNP biogenesis. GEMIN5 is found in nucleoplasm, nuclear bodies and cytoplasm.

## Notable Publications

Author	Pubmed ID	Journal	Application
Deepa S Rajan	35295849	Front Cell Dev Biol	WB
Dongxu Jiang	29537490	FEBS Lett	WB,IF

## Storage

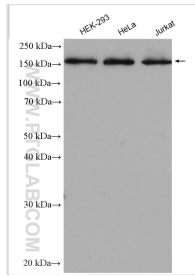
**Storage:**  
Store at -20°C. Stable for one year after shipment.  
**Storage Buffer:**  
PBS with 0.02% sodium azide and 50% glycerol pH 7.3.  
Aliquoting is unnecessary for -20°C storage

\*\*\* 20ul sizes contain 0.1% BSA

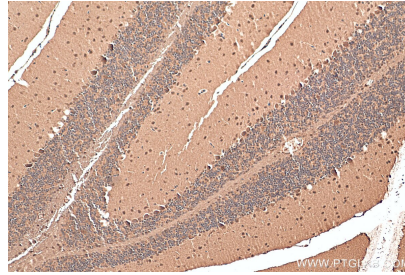
For technical support and original validation data for this product please contact:  
T: 1 (888) 4PTGLAB (1-888-478-4522) (toll free in USA), or 1(312) 455-8498 (outside USA)  
E: proteintech@ptglab.com  
W: ptglab.com

This product is exclusively available under Proteintech Group brand and is not available to purchase from any other manufacturer.

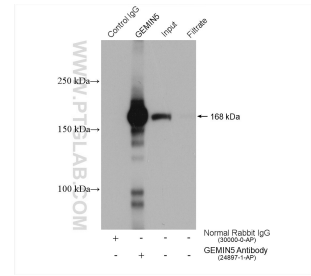
## Selected Validation Data



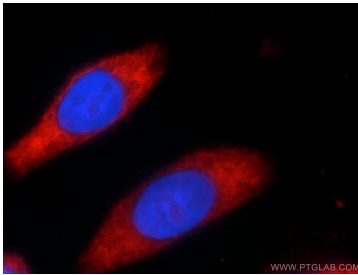
Various lysates were subjected to SDS PAGE followed by western blot with 24897-1-AP (GEMIN5 antibody) at dilution of 1:3000 incubated at room temperature for 1.5 hours.



Immunohistochemical analysis of paraffin-embedded mouse cerebellum tissue slide using 24897-1-AP (GEMIN5 antibody) at dilution of 1:200 (under 10x lens). Heat mediated antigen retrieval with Tris-EDTA buffer (pH 9.0).



IP result of anti-GEMIN5 (IP:24897-1-AP, 4ug; Detection:24897-1-AP 1:1000) with HeLa cells lysate 1880 ug.



Immunofluorescent analysis of HeLa cells using 24897-1-AP (GEMIN5 antibody) at dilution of 1:25 and Rhodamine-Goat anti-Rabbit IgG.