

For Research Use Only

# CUX2 Polyclonal antibody

Catalog Number: 24902-1-AP

3 Publications



## Basic Information

Catalog Number:

24902-1-AP

Size:

150ul, Concentration: 700 ug/ml by Nanodrop;

Source:

Rabbit

Isotype:

IgG

Immunogen Catalog Number:

AG18809

GenBank Accession Number:

BC151245

GeneID (NCBI):

23316

UNIPROT ID:

O14529

Full Name:

cut-like homeobox 2

Calculated MW:

1486 aa, 162 kDa

Observed MW:

162 kDa

Purification Method:

Antigen affinity purification

Recommended Dilutions:

WB 1:500-1:2000

## Applications

Tested Applications:

WB, ELISA

Cited Applications:

WB, IHC

Species Specificity:

human, mouse, rat

Cited Species:

mouse

Positive Controls:

WB : rat cerebellum tissue,

## Background Information

Cut like homeobox 2 (CUX2) also named as, CDP2 or CUTL2, is a 1486 amino acid protein, which contains one homeobox DNA-binding domain and three CUT DNA-binding domains. CUX2 localizes in the nucleus and belongs to the CUT homeobox family. CUX2 may as a transcription factor be involved in neural specification.

## Notable Publications

Author	Pubmed ID	Journal	Application
Benjamin D Weger	30344015	Cell Metab	WB
Debabrata Hazra	35136976	Cereb Cortex	IHC
Sriram Sudarsanam	39896513	bioRxiv	IHC

## Storage

Storage:

Store at -20°C. Stable for one year after shipment.

Storage Buffer:

PBS with 0.02% sodium azide and 50% glycerol, pH7.3

Aliquoting is unnecessary for -20°C storage

\*\*\* 20ul sizes contain 0.1% BSA

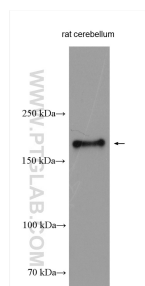
For technical support and original validation data for this product please contact:

T: 1 (888) 4PTGLAB (1-888-478-4522) (toll free in USA), or 1(312) 455-8498 (outside USA)

E: [proteintech@ptglab.com](mailto:proteintech@ptglab.com)  
W: [ptglab.com](http://ptglab.com)

This product is exclusively available under Proteintech Group brand and is not available to purchase from any other manufacturer.

## Selected Validation Data



rat cerebellum tissue were subjected to SDS PAGE followed by western blot with 24902-1-AP (CUX2 antibody) at dilution of 1:1000 incubated at room temperature for 1.5 hours.