

For Research Use Only

WFDC3 Polyclonal antibody

Catalog Number: 24917-1-AP **1 Publications**



Basic Information

Catalog Number: 24917-1-AP	GenBank Accession Number: BC148860	Purification Method: Antigen affinity purification
Size: 150ul, Concentration: 400 µg/ml by Nanodrop and 267 µg/ml by Bradford method using BSA as the standard;	GeneID (NCBI): 140686	Recommended Dilutions: IHC 1:20-1:200
Source: Rabbit	Full Name: WAP four-disulfide core domain 3	
Isotype: IgG	Calculated MW: 231 aa, 25 kDa	
Immunogen Catalog Number: AG20207		

Applications

Tested Applications: IHC, ELISA	Positive Controls: IHC : human pancreas tissue, human testis tissue
Cited Applications: CoIP, IF, IHC, WB	
Species Specificity: human	
Cited Species: human	
Note-IHC: suggested antigen retrieval with TE buffer pH 9.0; (*) Alternatively, antigen retrieval may be performed with citrate buffer pH 6.0	

Background Information

Notable Publications

Author	Pubmed ID	Journal	Application
Tianqi Liu	37443102	Cell Death Dis	WB, IHC, IF, CoIP

Storage

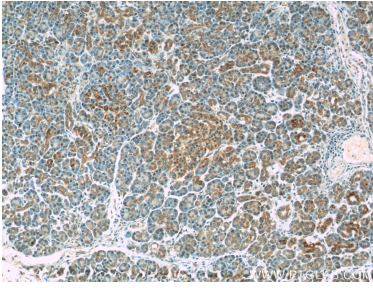
Storage:
Store at -20°C. Stable for one year after shipment.
Storage Buffer:
PBS with 0.02% sodium azide and 50% glycerol pH 7.3.
Aliquoting is unnecessary for -20°C storage

*** 20ul sizes contain 0.1% BSA

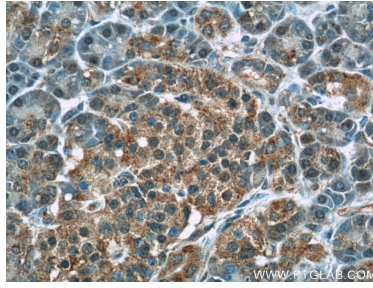
For technical support and original validation data for this product please contact:
T: 1 (888) 4PTGLAB (1-888-478-4522) (toll free in USA), or 1(312) 455-8498 (outside USA) E: proteintech@ptglab.com W: ptglab.com

This product is exclusively available under Proteintech Group brand and is not available to purchase from any other manufacturer.

Selected Validation Data



Immunohistochemical analysis of paraffin-embedded human pancreas tissue slide using 24917-1-AP (WFDC3 Antibody) at dilution of 1:50 (under 10x lens).



Immunohistochemical analysis of paraffin-embedded human pancreas tissue slide using 24917-1-AP (WFDC3 Antibody) at dilution of 1:50 (under 40x lens).