

For Research Use Only

# CEP112 Polyclonal antibody

Catalog Number: 24928-1-AP

Featured Product

3 Publications



## Basic Information

<b>Catalog Number:</b> 24928-1-AP	<b>GenBank Accession Number:</b> BC131805	<b>Purification Method:</b> Antigen affinity purification
<b>Size:</b> 150ul , Concentration: 800 µg/ml by Nanodrop and 373 µg/ml by Bradford method using BSA as the standard;	<b>GeneID (NCBI):</b> 201134	<b>Recommended Dilutions:</b> WB 1:500-1:1000 IF 1:20-1:200
<b>Source:</b> Rabbit	<b>Full Name:</b> coiled-coil domain containing 46	
<b>Isotype:</b> IgG	<b>Calculated MW:</b> 955 aa, 113 kDa	
<b>Immunogen Catalog Number:</b> AG21586	<b>Observed MW:</b> 110-113 kDa	

## Applications

<b>Tested Applications:</b> IF, WB, ELISA	<b>Positive Controls:</b> WB : HEK-293 cells, mouse testis tissue
<b>Cited Applications:</b> IF, WB	<b>IF :</b> MDCK cells,
<b>Species Specificity:</b> human, mouse, Canine	
<b>Cited Species:</b> human, mouse	

## Background Information

### Notable Publications

Author	Pubmed ID	Journal	Application
Yanwei Sha	31654588	Clin Genet	WB,IF
Quynh P H Nguyen	33038334	Dev Cell	WB,IF
Suchismita Panda	30296263	PLoS Biol	WB,IF

## Storage

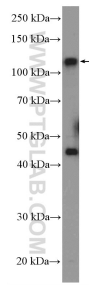
**Storage:**  
Store at -20°C. Stable for one year after shipment.  
**Storage Buffer:**  
PBS with 0.02% sodium azide and 50% glycerol pH 7.3.  
Aliquoting is unnecessary for -20°C storage

\*\*\* 20ul sizes contain 0.1% BSA

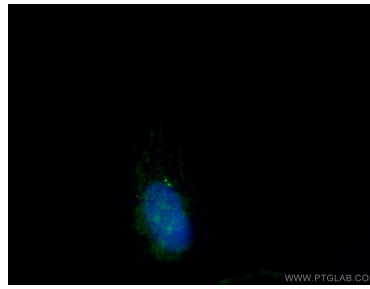
For technical support and original validation data for this product please contact:  
T: 1 (888) 4PTGLAB (1-888-478-4522) (toll free in USA), or 1(312) 455-8498 (outside USA)  
E: proteintech@ptglab.com  
W: ptglab.com

This product is exclusively available under Proteintech Group brand and is not available to purchase from any other manufacturer.

## Selected Validation Data



HEK-293 cells were subjected to SDS PAGE followed by western blot with 24928-1-AP (CEP112) antibody at dilution of 1:600 incubated at room temperature for 1.5 hours.



Immunofluorescent analysis of MDCK cells using 24928-1-AP (CEP112 antibody) at dilution of 1:50 and Alexa Fluor 488-conjugated AffiniPure Goat Anti-Rabbit IgG(H+L).