

For Research Use Only

KEPI Polyclonal antibody

Catalog Number: 24933-1-AP

Featured Product



Basic Information

Catalog Number:

24933-1-AP

Size:

150ul, Concentration: 450 ug/ml by Nanodrop;

Source:

Rabbit

Isotype:

IgG

Immunogen Catalog Number:

AG20645

GenBank Accession Number:

BC015773

GeneID (NCBI):

81706

UNIPROT ID:

Q8TAE6

Full Name:

protein phosphatase 1, regulatory (inhibitor) subunit 14C

Calculated MW:

18 kDa

Observed MW:

20-22 kDa

Purification Method:

Antigen affinity purification

Recommended Dilutions:

WB 1:500-1:3000

Applications

Tested Applications:

WB, ELISA

Species Specificity:

human

Positive Controls:

WB : HEK-293 cells, HeLa cells, MDA-MB-231 cells

Background Information

PPP1R14C, found as a morphine-regulated brain gene, encodes protein phosphatase 1 regulatory inhibitor subunit 14C, and is identified as a potent inhibitor of PP1. Horvath and colleagues reported that PPP1R14C inhibited the release of neurotransmitters and promoted neuronal exocytosis by retaining synaptosome associated protein 25 (SNAP25) at a phosphorylated state. Moreover, overexpression of PPP1R14C increased the phosphorylation of RB transcriptional co-repressor 1 (RB1) to protect leukemic cells from chemotherapy.

Storage

Storage:

Store at -20°C. Stable for one year after shipment.

Storage Buffer:

PBS with 0.02% sodium azide and 50% glycerol pH 7.3.

Aliquoting is unnecessary for -20°C storage

*** 20ul sizes contain 0.1% BSA

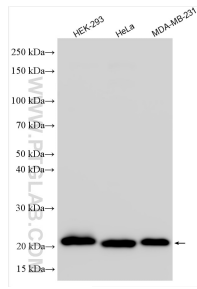
For technical support and original validation data for this product please contact:

T: 1 (888) 4PTGLAB (1-888-478-4522) (toll free in USA), or 1(312) 455-8498 (outside USA)

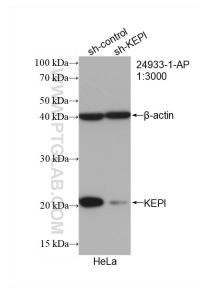
E: proteintech@ptglab.com
W: ptglab.com

This product is exclusively available under Proteintech Group brand and is not available to purchase from any other manufacturer.

Selected Validation Data



Various lysates were subjected to SDS PAGE followed by western blot with 24933-1-AP (KEPI antibody) at dilution of 1:1500 incubated at room temperature for 1.5 hours.



WB result of KEPI antibody (24933-1-AP; 1:3000; incubated at room temperature for 1.5 hours) with sh-Control and sh-KEPI transfected HeLa cells.