

For Research Use Only

SEC61 Alpha Polyclonal antibody, PBS Only

Catalog Number: 24935-1-PBS



Basic Information

Catalog Number:

24935-1-PBS

Size:

100ug, Concentration: 1 mg/ml by Nanodrop;

Source:

Rabbit

Isotype:

IgG

Immunogen Catalog Number:

AG20779

GenBank Accession Number:

BC026179

GeneID (NCBI):

55176

UNIPROT ID:

Q9H9S3

Full Name:

Sec61 alpha 2 subunit (*S. cerevisiae*)

Calculated MW:

52 kDa

Observed MW:

52 kDa

Purification Method:

Antigen affinity purification

Applications

Tested Applications:

WB, Indirect ELISA

Species Specificity:

human, mouse

Background Information

The SEC61 complex is a major component of the endoplasmic reticulum (ER) translocation site (PMID: 7720858). This complex is composed of three subunits: SEC61alpha, SEC61beta and SEC61gamma. SEC61alpha is a polytopic integral membrane protein. It is a core component of the ER translocation complex, playing a crucial role in the insertion of secretory and membrane polypeptides into the ER (PMID: 9512475).

Storage

Storage:

Store at -80°C.

Storage Buffer:

PBS Only

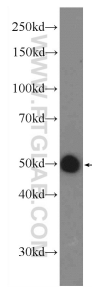
For technical support and original validation data for this product please contact:

T: 1 (888) 4PTGLAB (1-888-478-4522) (toll free in USA), or 1(312) 455-8498 (outside USA)

E: proteintech@ptglab.com
W: ptglab.com

This product is exclusively available under Proteintech Group brand and is not available to purchase from any other manufacturer.

Selected Validation Data



mouse brain tissue were subjected to SDS PAGE followed by western blot with 24935-1-AP (SEC61alpha antibody at dilution of 1:600 incubated at room temperature for 1.5 hours. This data was developed using the same antibody clone with 24935-1-PBS in a different storage buffer formulation.